

# Pearson (Edexcel) BTEC National Extended Certificate Level 3 **Health and Social Care**

With Miss Short



**5<sup>th</sup>**

The NHS is the  
fifth largest  
employer in the  
world

**255**

The average  
number of  
patients that a  
full-time GP  
treats a week

**1.4m**

people work for  
the NHS

**1m**

people are  
treated every  
36 hours

**350+**

different career  
options in the  
NHS

**21.9m**

The number of people in  
the UK aged 60+ by 2040.

# The course

**Grades Distinction\* to Pass**  
equivalent to **1 A Level** and carries  
**UCAS points** for university entry

## Year 12 modules:

**Unit 1:** Human Lifespan Development (exam)

**Unit 5:** Meeting Individual Care and Support Needs (coursework)

## Year 13 modules:

**Unit 14:** Physiological Disorders and their Care (coursework)

**Unit 2:** Working in Health and Social Care (exam)

# Unit 1 Human Lifespan Development Exam



1. Human growth and development through the life stages
2. Factors affecting human growth and development
3. Effects of ageing

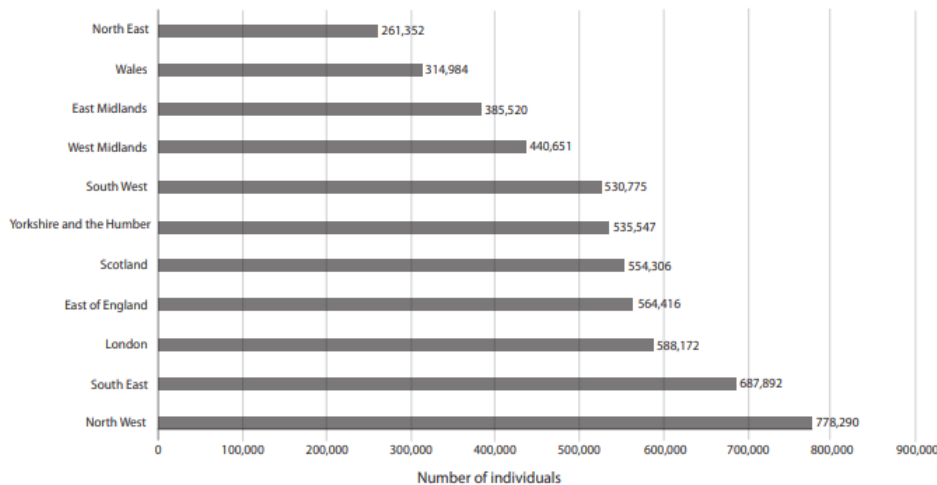


# Unit 1 assessment examples

The Khan family's house is on a busy road in London.

Aisha (10 years old) and Asif (six years old) both attend a school that is on the same road as their house. Aisha and Asif have both developed asthma.

**Number of individuals with asthma in Great Britain in 2015, by region**



(Source: Asthma UK © Statista 2017)



Amir's mother, Zainab, has developed dementia and Amir and his wife are finding it increasingly difficult to look after her.

The family have now decided to move Zainab into a care home.

- (e) Assess the impact of moving into a care home on an individual's health and wellbeing.

# Unit 1 assessment examples

The school where Laura works is in an area with high levels of economic deprivation.

(d) Evaluate the impact of living in a low-income household on a child's development.

(10)



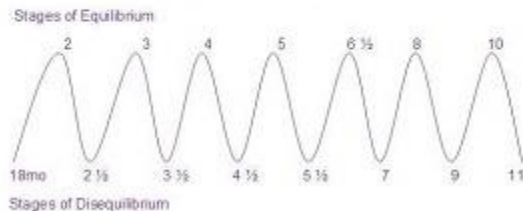
The children Laura teaches have a diverse range of abilities in reading, writing and mathematics.

(e) To what extent does Gesell's maturation theory explain intellectual development?

(10)

## Stages of Development

All children cycle in and out of stages of equilibrium and disequilibrium.





# Unit 5 Meeting Individual Care Needs coursework



**NICE** National Institute for  
Health and Care Excellence

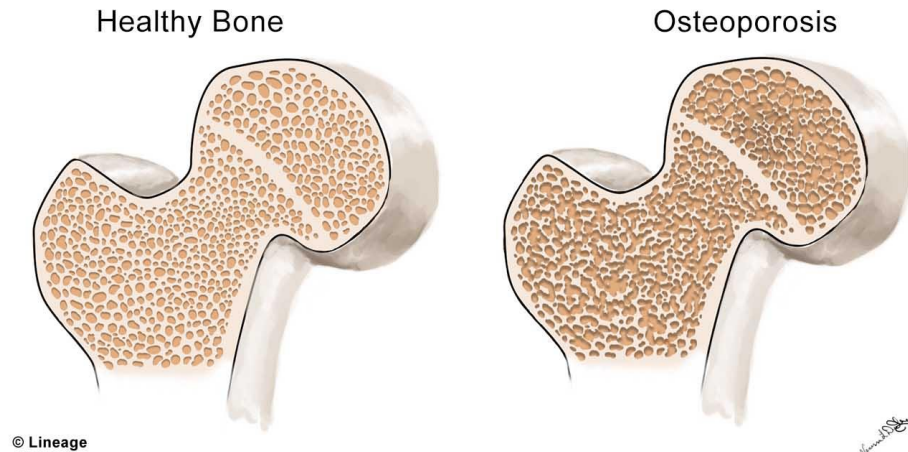
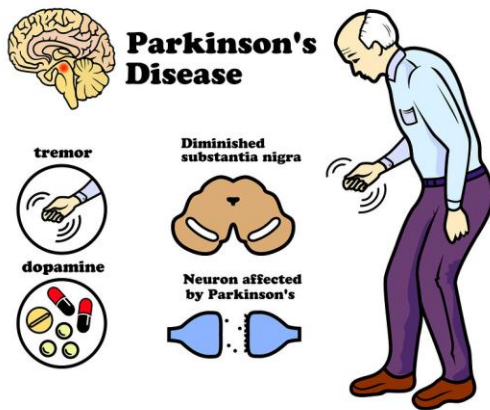


1. Identifying care needs  
– communication,  
observation, policies  
and procedures
2. Overcoming  
challenges in meeting  
individual care needs  
including ethics
3. Laws that support

# Unit 14 Physiological Disorders

## coursework

1. Causes, signs, symptoms and effects of two physiological disorders.
2. The diagnosis of disorders.
3. The support and treatment of disorders.





# Unit 2 Working in Health & Social Care exam

1. The roles and responsibilities of people working in the health and social care sector
2. The roles of organisations
3. Working with people with specific needs



# Grading

BTEC Level 3	UCAS points	A Level equivalent
Distinction*	56	A*
Distinction	48	A
Merit	32	C
Pass	16	E

You must pass each unit to achieve this qualification



# Next steps...



## Employment

- The course prepares students for working in Health and Social Care or related sectors

## Further study

- Nearly all universities in relevant subject areas accept BTECs, similar to how they would with equivalent A-level qualifications.
- BTEC students are considered to be well-prepared for under graduate study due to the independent study involved