

# Ecclesbourne School

Year 13 booster post 18 evening  
September 2025



# Sixth form Pastoral Team



**Mrs Weller**  
Head of Sixth Form



**Mrs Hadwin**  
Head of Year 13



**Mrs Bamber**  
Head of Year 12



**Mrs Cox**  
Administration/  
Admissions Lead



# University applications

# UCAS

## **Early entry**

**(Oxford, Cambridge, Medics,  
Vets, dentists)**

Finalising personal statements.  
Paying and submitting UCAS form.  
Staff are reference writing.  
Internal deadline:

**Friday 29th September 2025**

UCAS deadline Early Entry deadline:

**Wednesday 15<sup>th</sup> October 2025**

## **Non – early entry**

**All other courses**

Choosing courses/open days.  
Writing personal statements.  
Paying and submitting UCAS form.  
Staff are reference writing.  
Internal deadlines:

**Monday 10<sup>th</sup> November 2025**

UCAS equal consideration deadline:  
**Wednesday 14th January 2026**

# Resources to support students.

---

Show My Homework – guide to completing applications

Post 18 support - links to useful resources to help you with your post 18 choices

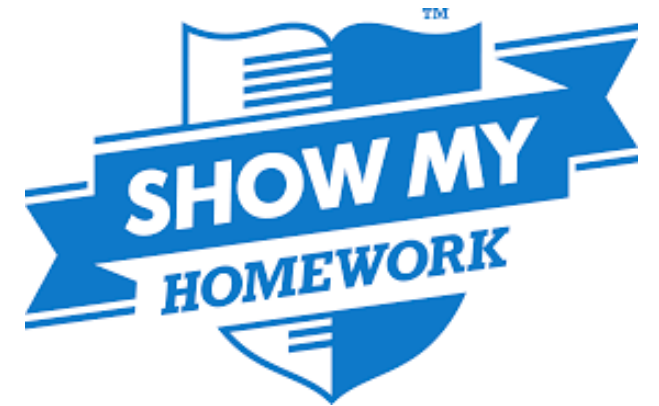
UNIFROG

How to complete the UCAS form

How to request references from staff

How to write a personal statement

\*info for apprenticeship applications is also on here.

The UCAS logo, featuring the letters 'UCAS' in a bold, sans-serif font. The 'A' is stylized with a red triangle pointing upwards.The unifrog logo, featuring the word 'unifrog' in a green, lowercase, sans-serif font.

# What can you do to help at this stage?

Support them to explore their options – open days, applicant days.

Help them check the entry requirements.

Help them make sensible choices – have they got an insurance?

If they are worrying get them to talk to their tutor or a member of SFO.

Help them draft their personal statement.

Check their UCAS form – errors cause delays.

Form	Supporting staff
13B	Mrs D Cotton
13C	Ms S McCammon
13J	Mr J Cuthbert
13M	Mr R Mason
13P	Mr C Martin
13R	Miss E MacCormick
13S	Ms D Fones
13T	Mrs T Bartlett Ms S James

# What happens when you pay and submit?

The UCAS form comes to Sixth Form Office.

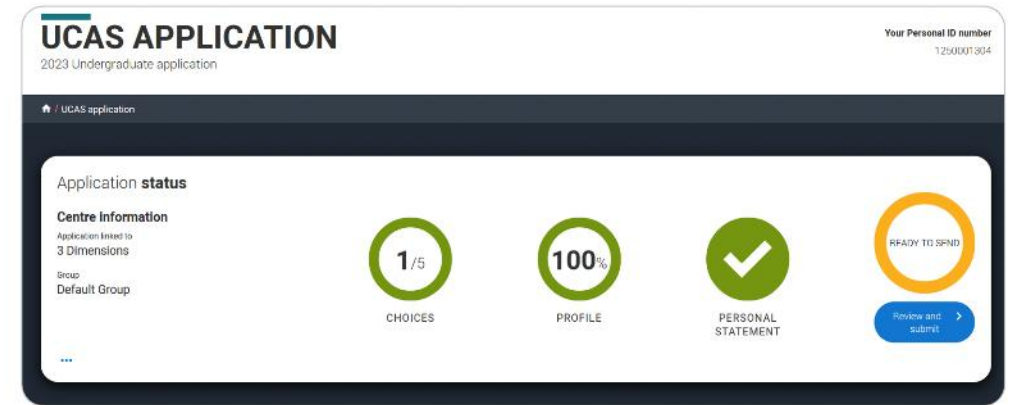
We check the applications and send them back if there are errors.

We add the school reference and predictions.

We check with the student if they are happy to send to UCAS.

We hit send – after this point it is very difficult to make changes.

Wait for offers to come rolling in. This could be within days or a few months. Some institutions wait until after the equal consideration deadline, others do them in batches.



The screenshot shows the UCAS Application 2023 Undergraduate application status page. The page has a dark blue header with the UCAS logo and the text 'UCAS APPLICATION' and '2023 Undergraduate application'. On the right, it says 'Your Personal ID number 1250001804'. Below the header, there is a section titled 'Application status' with a sub-section 'Centre Information' showing 'Applications linked to 3 Dimensions' and 'Group: Default Group'. The main status area shows four progress indicators: 'CHOICES' with '1/5', 'PROFILE' with '100%', 'PERSONAL STATEMENT' with a green checkmark, and 'READY TO SEND' with an orange circle and a 'Review and submit' button. A large yellow circle is visible in the bottom right corner of the slide.

Admissions testing for Oxford, Cambridge, UCAT and LNAT  
Students may be invited to interview – this varies by course.

[Oxford interview dates](#)

[Cambridge key dates](#)

Students may be required to submit work or a portfolio.

**We will provide interview prep for any students who need it:  
Medics, vets, Oxbridge, vocational roles like nursing, physiotherapy, teaching**

If you think you can help us out with these or know someone who can please get in touch.



Provider name	Provider code
University of Bristol	B78
Course name	Course code
Politics and International Relations	L200
Course start date	Point of entry
01 Sep 2023	Year 1
Conditions for acceptance	
This offer is subject to you obtaining	
GCE A level Grades AAA	
Please also see email from the University for any additional non-academic conditions including your fee status.	

# Conditional Unconditional Unsuccessful

Provider name	Provider code
Harper Adams University	H12
Course name	Course code
Veterinary Nursing with Small Animal Rehabilitation (with Placement)	D310
Course start date	Point of entry
26 Sep 2022	Year 1
Conditions for acceptance	
This offer is subject to you obtaining	
Obtain 96 points from 3 GCE A Levels to include a grade C in	
Biology.You are required to obtain 4 weeks work experience	
with animals. A minimum of 7 days of this MUST be in a	
veterinary practice plus a reference, as part of your offer	
BEFORE 4th July 2022. Please complete and return the	
Vocational Log and reference form as soon as you have	
completed this. You must also return the attached Fitness to	
Practice.	

Provider name	Provider code	UNSUCCESSFUL
UCL (University College London)	U80	
Course name	Course code	Date of offer
Politics and International Relations	L251	18 Apr 2023
Course start date	Point of entry	Application reply deadline
25 Sep 2023	Year 1	-
Conditions for acceptance		
Due to the strong quality of applications, competition is		
extremely high. We carefully evaluate all aspects of an		
application as well as assessing it in relation to others.		
Regrettably, your application was not quite as strong as		
that of others.		



**Wednesday 26<sup>th</sup> Feb 2026**

[UCAS Extra](#) opens. If your child has used all five choices and is not holding an offer, they can add another choice using Extra.

**If you receive all your offers by 31st March you must reply by Friday 6th May 2026**

## **Offer and reply combinations**

**Unconditional firm (UF)** – You're in!

**Conditional firm (CF)** – You're in if you meet the conditions.

**Conditional firm (CF) and conditional insurance (CI)** – You've made a first and second choice – you'll be in at the first if you meet the conditions. If not, you might have met the conditions of the second – if so you'll be on that course instead.

**Conditional firm (CF) and unconditional insurance (UI)** – You've made a first and second choice – if you meet the conditions of the first you'll be on that course. If not, you'll definitely be on the second.

# Results day - Thursday 13<sup>th</sup> August 2026

---

**Scenario 1** - your child gets the grades required for their firm choice and they take up their place.

**Scenario 2** - your child gets the grades required for their firm choice but they decide they have seen a course they prefer in clearing. They should secure an offer through clearing and ask to be released into clearing by the firm choice.

**Scenario 3** - your child does not get the grades required for their firm choice.

Check the UCAS website, they may have been accepted anyway.

If they meet the insurance offer they will be accepted there.

If they have seen a course they prefer in clearing they should secure an offer through clearing and ask to be released into clearing by the insurance choice.

**Scenario 4** - They do not get either their firm or insurance choice. They are now eligible for clearing.

First thing is **don't panic**. Students will need a hug, some time to process and to know that you are there to help them with a plan.

On results day we always have SFO staff on hand to help with this.

Look at what is available in **clearing – open Thursday 5<sup>th</sup> July 2025**

You can do this in advance of results day but the picture of what is available becomes clearer on results day.

Each university will have a clearing helpline – students call them, staff take details and an admissions tutor gets back in touch to let them know if they will make them offer. Sometimes a phone interview is required particularly for vocational courses.

You can secure as many offers as you like in clearing but the universities may make it time limited – particularly at competitive places.

It is important to act quickly.

# Things to help in scenario 4.

---

Have raw scores – we can provide these on the day.

If you have missed a grade by 1 mark it can help to have this information.

If you smashed a grade boundary this can help.

It may be worth contacting grade/points equivalents – each university is different, eg one may reject A, A, A but another may accept A\*, A, B

Try the same universities but with a slightly different course title eg Politics and Spanish rather than Politics and International relations.



# Things to consider

Paper remarks – on results day we can support with this.

Consider taking a year and re-applying if they are unable to find something suitable.

Some students re-sit A levels and use the extra time to get some more work experience.

Some student get the grades required and re-apply the next year – more common in subjects like medicine/veterinary.

Things tend to work out!



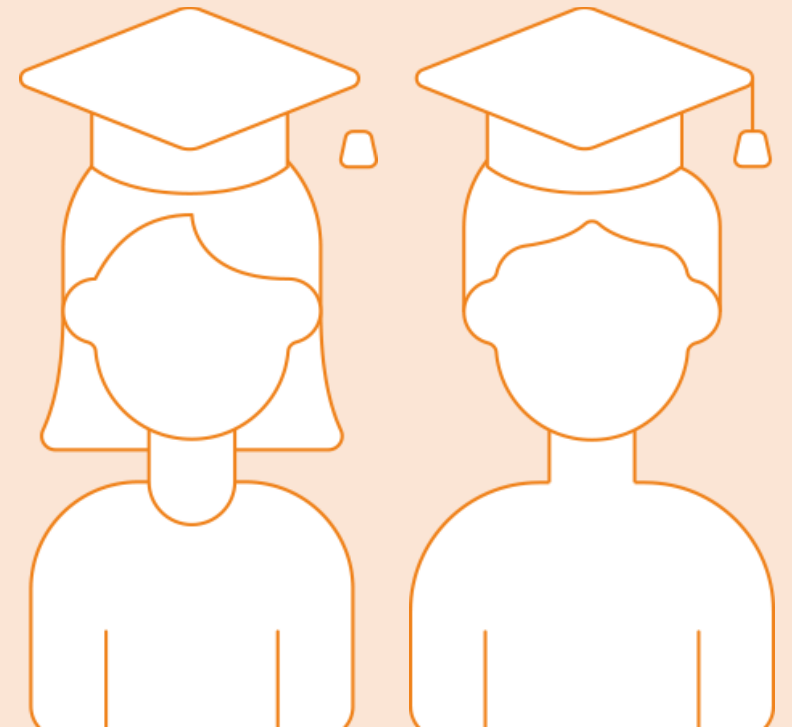
# Student Finance



Financial support is available to meet your two main costs at university

**Your Tuition Fees** – up to £9,535 per year

**Your Living Costs** – rent, food, bills

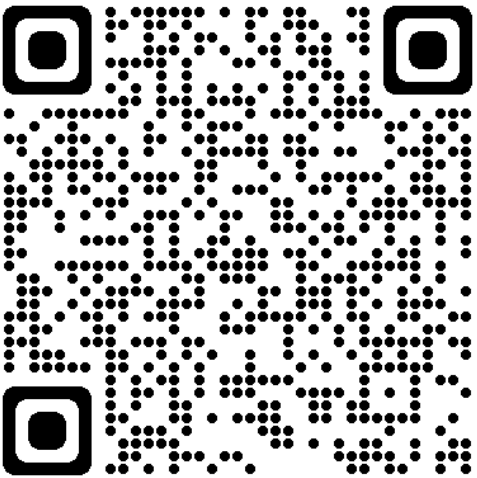


# Support available: tuition fees

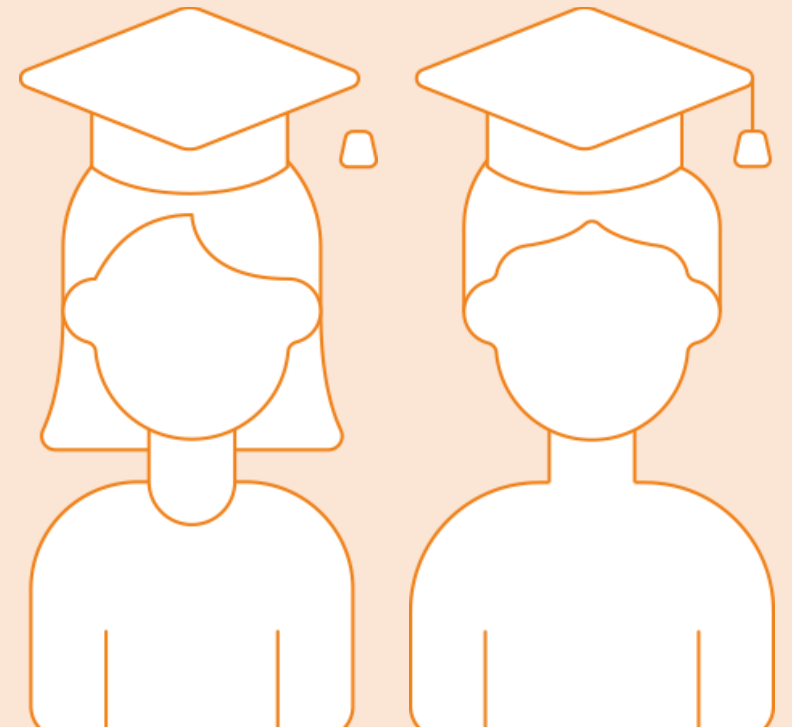
Apply through  
Student Finance  
England



Paid directly to  
your university




*Scan the QR code for  
information about SFE*



# Maintenance loans

In assessing you for your Maintenance Loan, Student Finance England will want to know a few things from you:



1. Where will you be living whilst you're at university?

2. What is your total annual residual household income?



# Maintenance loan

## Parental Home Rate:

Live at home while you study

Up to  
£8,877\*

## Elsewhere Rate:

Live and study away from home outside of London

Up to  
£10,544\*

## London Rate:

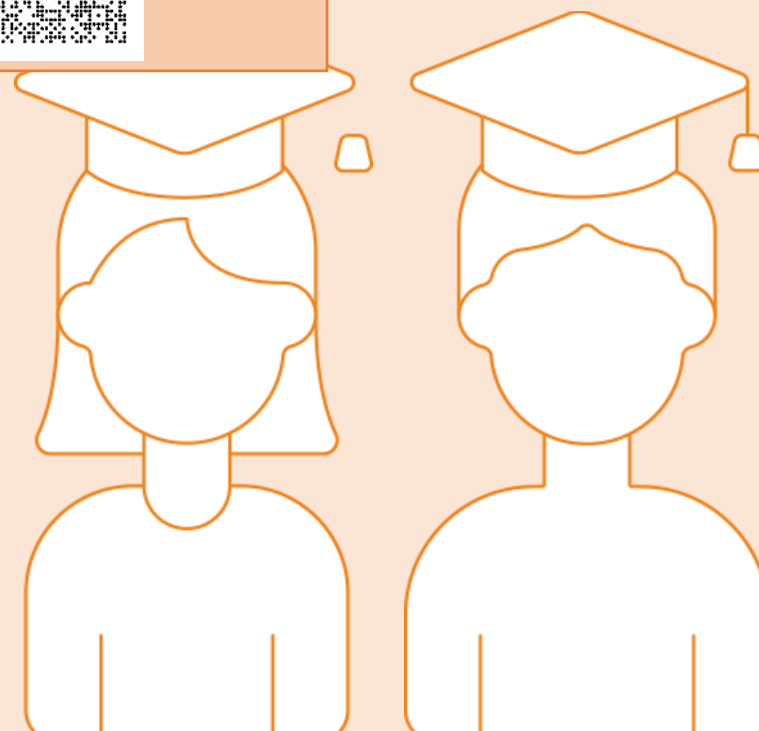
Live and study away from home in London

Up to  
£13,762\*

## Key Advice:

Use the Student Finance England Calculator to see how much funding you could get:

<https://www.gov.uk/student-finance-calculator>

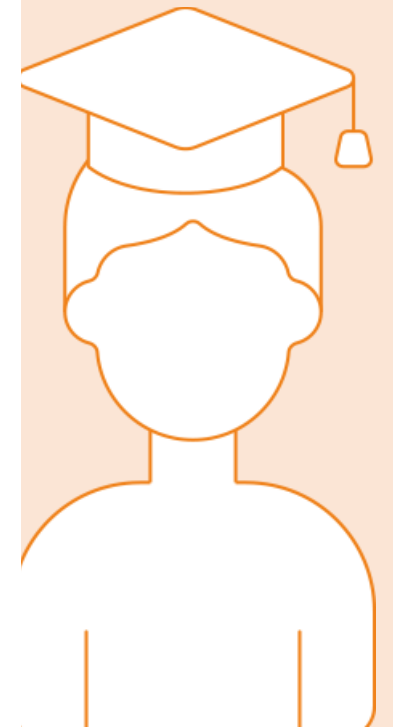


\*based on 2025/26 figures

# Maintenance loan – Household Contributions

## Maintenance Loan entitlement

Household income	Maintenance Loan – living away from home and studying outside London	Maintenance Loan – living away from home and studying in London	Maintenance Loan – living with parents
£25,000	£10,227	£13,348	£8,610
£30,000	£9,497	£12,606	£7,887
£35,000	£8,766	£11,863	£7,163
£40,000	£8,035	£11,120	£6,440
£42,875	£7,614	£10,692	£6,024
£45,000	£7,304	£10,377	£5,716



# Student finance – am I eligible?

To qualify for Financial Support the student must meet two main criteria:

- You have been resident in the UK for **three years prior** to the start of your course.
- You do not **already hold** an honours degree (previous study in HE may affect your entitlement). There are some exceptions to this.

EU students can apply for Maintenance Loan support if they have been resident in the UK for **five years or more**

# How to apply...

Apply online for funding from Student Finance England at **[www.gov.uk/studentfinance](https://www.gov.uk/studentfinance)**



May - September  
Sign and return  
declaration form

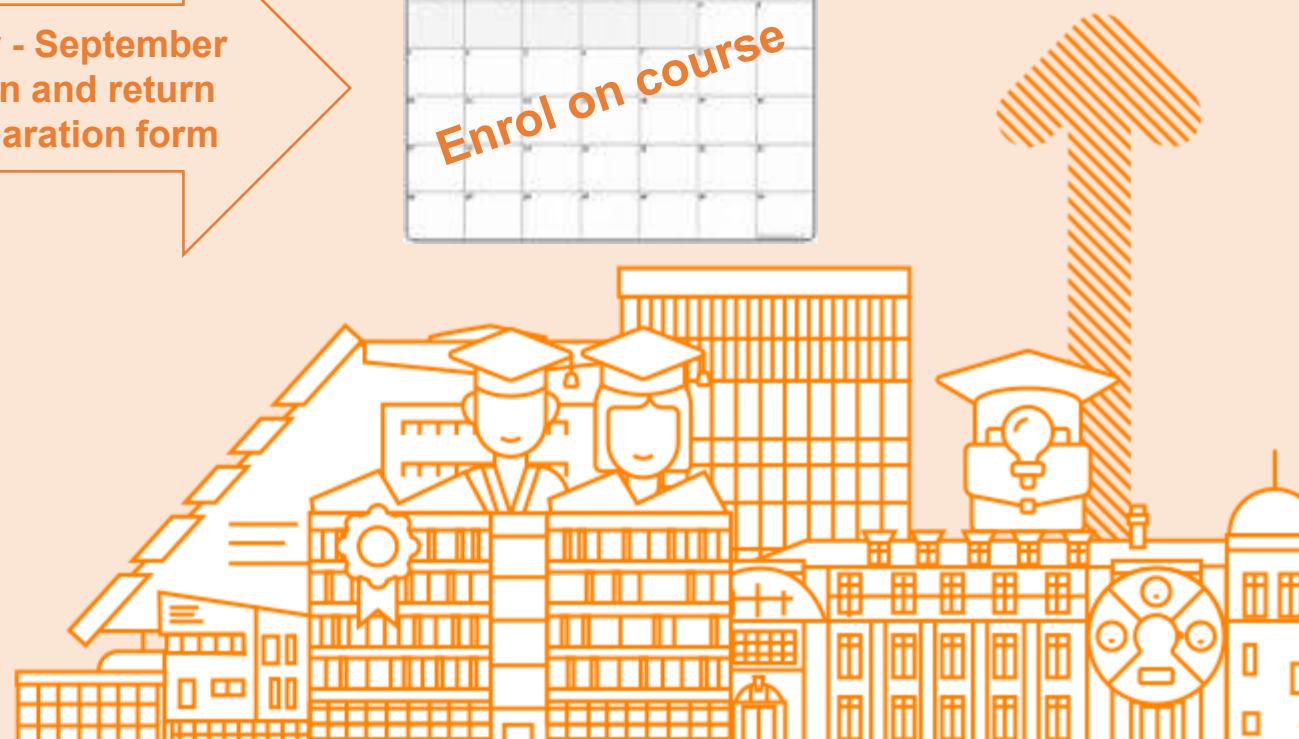


Check out some helpful videos on:

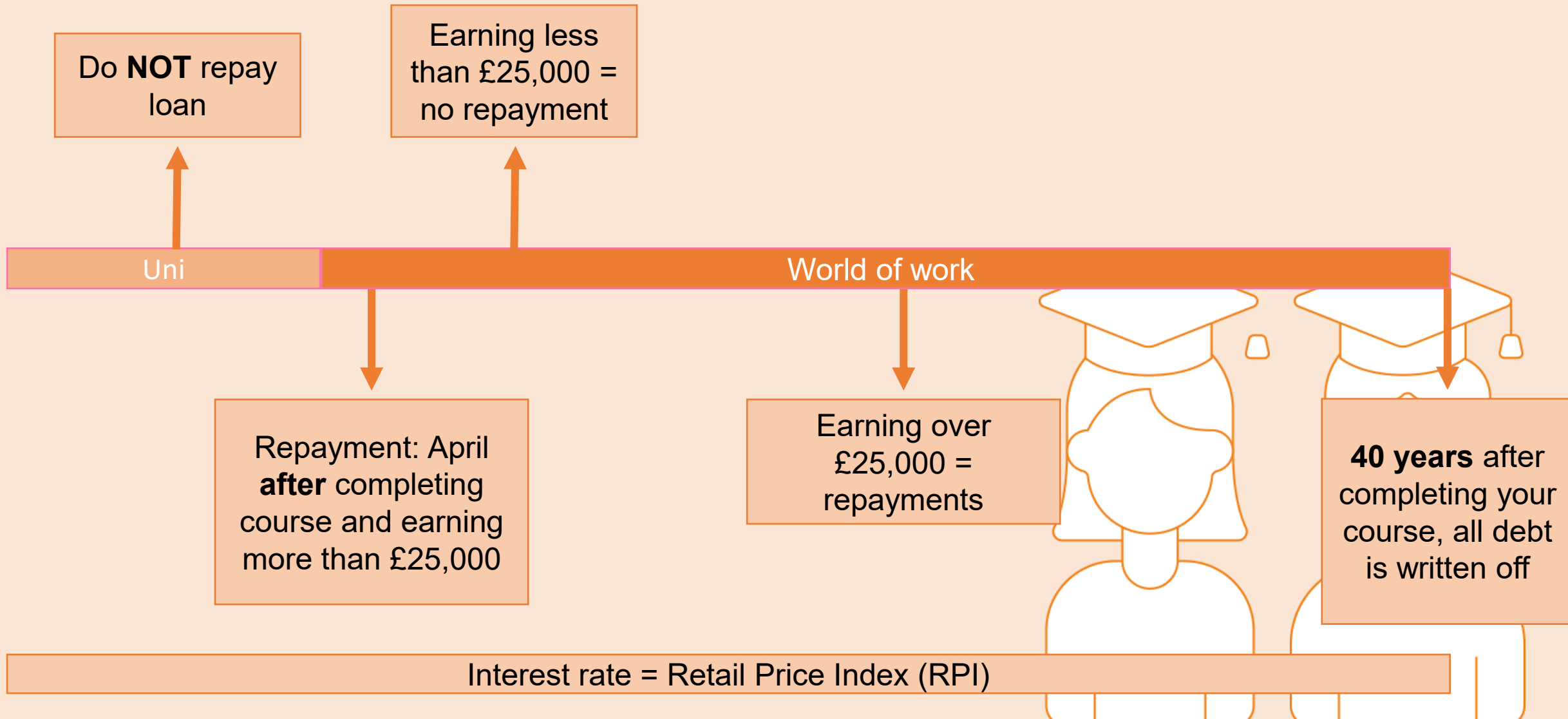
[www.youtube.com/user/sfefilm](https://www.youtube.com/user/sfefilm)

[Government student finance guide](#)

[Guide from Martin Lewis](#)



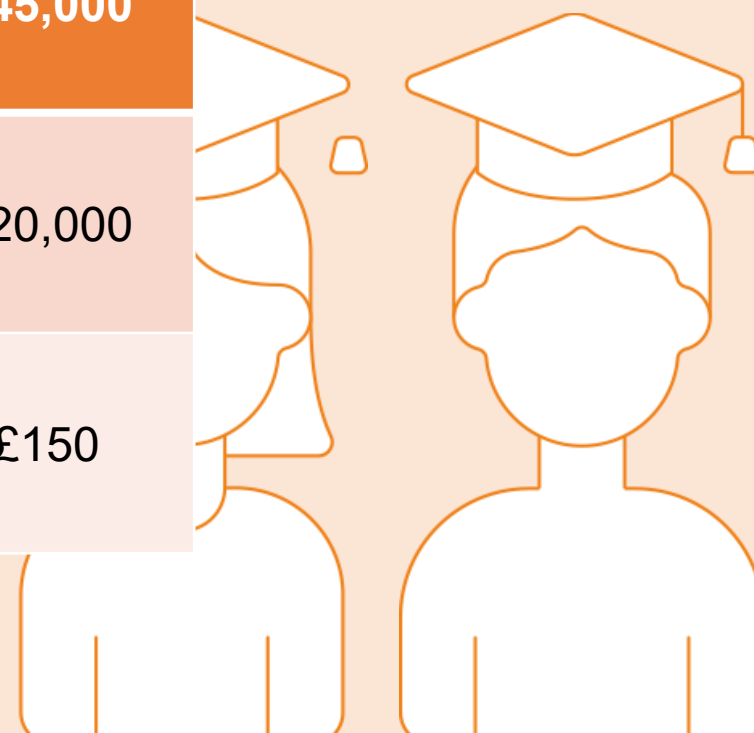
# Repayments



# Repayments – what does this mean?

Repayments are made on 9% of earnings above the £25,000 threshold

Income each year before tax	£25,000	£35,000	£40,000	£45,000
9% will be deducted from	£0	£10,000	£15,000	£20,000
Monthly Repayments (Approximately)	£0	£75	£112	£150



# Grants and bursaries

## Government Grants

- Parents learning allowance
- Adult dependant grant
- Childcare grant
- Disabled Student Allowance (DSA)

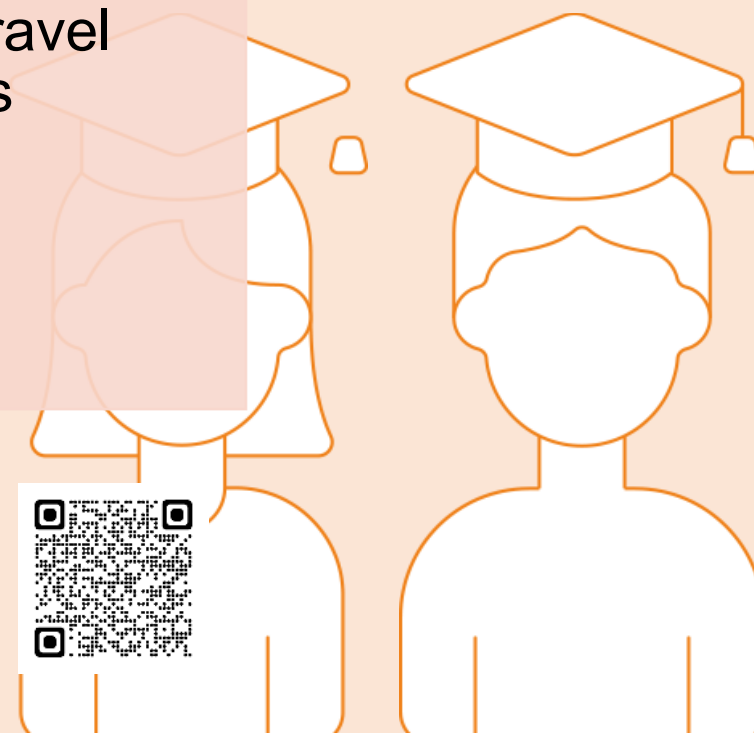
## SHU Scholarships and Bursaries

- Student success scholarship
- Care leaver bursary
- Placement bursary
- Performance athlete support programme

## NHS Learning Support Fund

- £5000 per year
- £2000 for child dependants
- Excess travel expenses
- + more

Check eligibility on the websites: [www.thescholarshiphub.org.uk](http://www.thescholarshiphub.org.uk)



# NHS LSF and Social Work Bursary

## Nursing & Midwifery

Nursing (Adult)

Nursing (Child)

Nursing (Mental Health)

Learning Disability Nursing  
&  
Social Work

Midwifery

## Allied Health

Occupational Therapy

Physiotherapy

Diagnostic Radiography

Operating Department  
Practice

Paramedic Science

Radiotherapy and Oncology

## Social Care

Social Work

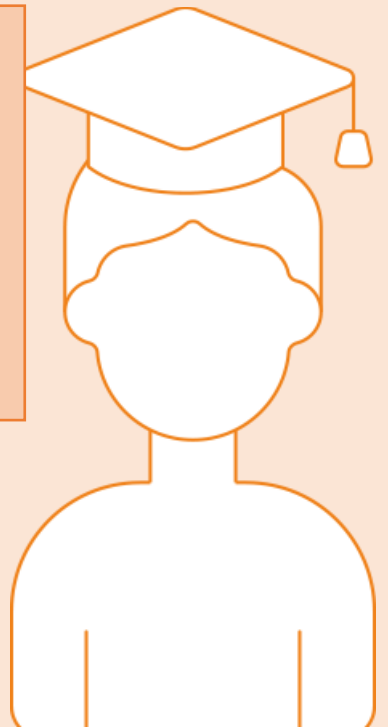
Check eligibility on the website:

[www.nhsbsa.nhs.uk/social-work-students](http://www.nhsbsa.nhs.uk/social-work-students)



Check eligibility on the website:

[www.NHSbsa.nhs.uk/nhs-learning-support-fund](http://www.NHSbsa.nhs.uk/nhs-learning-support-fund)





# Disabled Students Allowance



## **Disabled Students Allowance**

**You can apply for DSA from Student Finance England before you start your course. This is applied to separately from your maintenance/tuition fee loan**

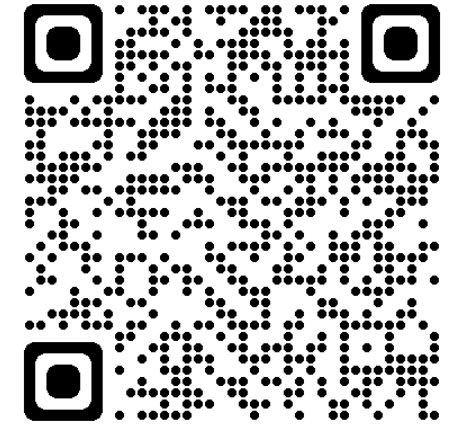
## **Disclosure**

**Disclosing a disability on your application does not impact the outcome. It is only asked so support can be recommended to you.**

## **Application**

**It can take up to three months to get your DSA support in place so you should apply for it as soon as you have applied for a course.**

# Managing your money

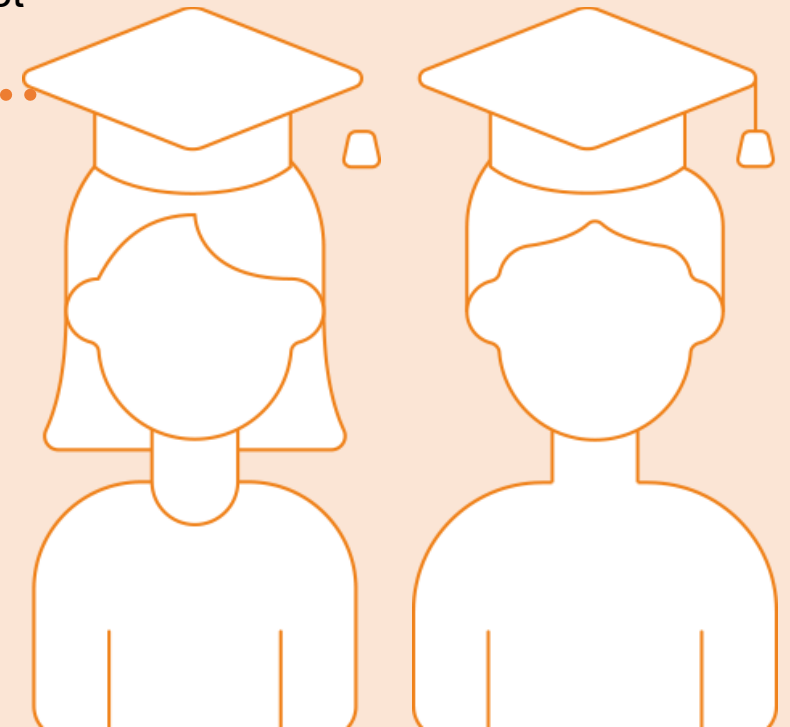


Before  
Uni

- Bring money with you – your maintenance loan is deposited in your account within 3-5 working days after you enrol
- Talk to your bank about setting up a student bank account – different banks have different offers e.g. free rail card, cash incentives, 0% interest on overdrafts
- Plan and budget – [blackbullion.com](https://blackbullion.com) can be used to help you budget

At Uni

- Part time work - Students can work an advised 10 - 12 hours per week without studies being affected
- Your maintenance loan is paid in **three** installments throughout the year
- Budget – [blackbullion.com](https://blackbullion.com) can be used to help you budget



# Apprenticeships - where to look

[www.gov.uk/apply-apprenticeship](http://www.gov.uk/apply-apprenticeship)

[notgoingtouni.co.uk](http://notgoingtouni.co.uk)

[www.healthcareers.nhs.uk](http://www.healthcareers.nhs.uk)

Company websites



## Find an apprenticeship

Find an apprenticeship in England.

You can apply for apprenticeships in [Scotland](#), [Northern Ireland](#) and [Wales](#).

Search >



Intermediate (3)  
Equivalent to GCSEs

Advanced (15)  
Equivalent to A-levels

Higher / Degree (48)  
Equivalent to Foundation / Bachelor's

[www.ratemyapprenticeship.co.uk](http://www.ratemyapprenticeship.co.uk)

★ RATEMYAPPRENTICESHIP

UCAS

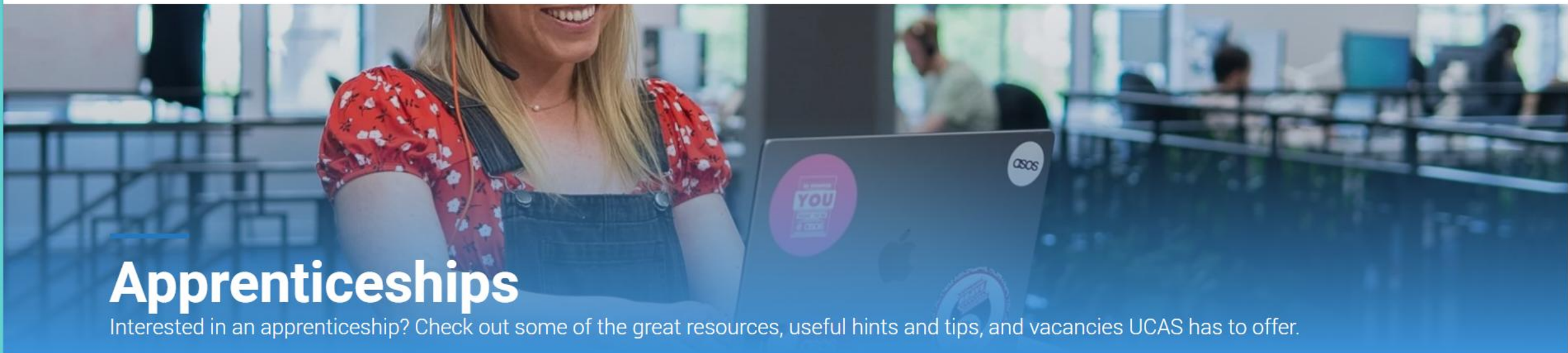
Search

Apprenticeship vacancies



Rolls-Royce





# Apprenticeships

Interested in an apprenticeship? Check out some of the great resources, useful hints and tips, and vacancies UCAS has to offer.



## Discover employers offering apprenticeships

Get to know leading brands and the range of apprenticeships they offer. Including leading employers such as Sky, KPMG, Rolls Royce, and more.

Save on Mac and iPad for uni, choose AirPods or an eligible accessory.\*

Shop

THINKING ABOUT





## Discover employers offering apprenticeships


Get to know leading brands and the range of apprenticeships they offer. Including leading employers such as Sky, KPMG, Rolls Royce, and more.

[EXPLORE EMPLOYERS](#)



Save on Mac and iPad for uni, choose AirPods or an eligible accessory.\*

[Shop](#)





## THINKING ABOUT A GAP YEAR?

[CLICK HERE FOR TRAVEL IDEAS](#)

Advertisements. [Why the ads?](#)

DISCOVER APPRENTICESHIPS - FIND OUT EVERYTHING YOU NEED TO KNOW



### Find an apprenticeship

Search for an apprenticeship using our apprenticeship search



### What is an apprenticeship?

Get the facts on apprenticeships and how they work.



### Subscribe to Smart Alerts

Get live apprenticeship vacancies straight to your inbox based on your interests, location, and travel preferences

Feedback





BAE Systems



BakerHicks



Bloomberg



bp



Bright Horizons



British Airways



British Broadcasting Corporation (BBC)



Buzzacott



https://www.ucas.com/explore/employer/british-broadcasting-corporation-bbc



CGI UK Limited



City Century



Co-op

# Smart alerts.....

The screenshot shows the UCAS dashboard preferences page for apprenticeships smart alerts. The browser tabs include Student Profile, Faculty Sites, Mail - Hannah, Faculty - Science, Sixth Form Office, Post 18 Boost, Home | Eccles, Satchel One, Hub | UCAS, ucas-apprenticeships, big-map-24, and what date do. The URL is https://wwwucas.com/dashboard#/preferences?section=apprenticeships-smart-alerts. The left sidebar contains links for Your profile, Preferences (highlighted), Password and security, and Language settings. The main content area has a 'Yes' radio button selected at the top. Below it, a text prompt asks to select a gender, with options: Man, Woman (selected), I use another term, and I prefer not to say. A checkbox is checked for consent to use gender data for Smart Alerts. The next section, 'How far would you want to travel for an apprenticeship role?', includes a dropdown menu with options: Not applicable, 0 - 10 miles, up to 20 miles, up to 30 miles (highlighted), and 30+ miles. Below this is a 'Would you be willing to relocate?' section with 'Yes' and 'No' radio buttons. The 'When can you start an apprenticeship?' section has two empty dropdown menus. The 'What level of apprenticeship study are you interested in?' section has three unchecked checkboxes: Intermediate apprenticeships (Level 2), Advanced apprenticeships (Level 3), and Higher apprenticeships (Level 4 - 7). A red 'Feedback' button is on the right. An orange banner at the bottom asks 'How satisfied are you with your experience today?'. The Windows taskbar at the bottom shows various icons and the time 11:27 on 25/09/2025.

https://wwwucas.com/dashboard#/preferences?section=apprenticeships-smart-alerts

Your profile

[Preferences](#)

Password and security

Language settings

☒ Yes ☐ No

Select the gender you most identify at this time. Some employers may use this data to improve diversity within their recruitment pool.

☐ Man ☒ Woman ☐ I use another term ☐ I prefer not to say

☒ I consent to my gender data being used for Smart Alerts (any changes to how you identify will also be reflected within any gender data shared with us in the marketing preferences of your Hub profile)

**How far would you want to travel for an apprenticeship role?**

This will help us match you to employers in your geographical area based on how far you want to travel.

Select an option

Select an option

Not applicable

0 - 10 miles

up to 20 miles

**up to 30 miles**

30+ miles

Would you be willing to relocate?

☐ Yes ☐ No

**When can you start an apprenticeship?**

Select an option / Select an option

What level of apprenticeship study are you interested in?

☐ Intermediate apprenticeships (Level 2)

☐ Advanced apprenticeships (Level 3)

☐ Higher apprenticeships (Level 4 - 7)

**How satisfied are you with your experience today?**

Feedback

11:27  
25/09/2025

Asks what area  
you are interested  
in

# Apprenticeship search – through Unifrog

The dashboard is organized into five main sections: Quizzes, Recording, Searching, Exploring, and Applications. Each section contains several interactive tiles with progress indicators and right-pointing arrows.

- Quizzes:** Skills profile (Quiz not taken), Quiz profile (0 of 4 quizzes complete).
- Recording:** Activities (Recorded at least 10), Skills (Completed all 12), Interactions (Missing 5 Interaction types), Academics (3 Classes, 3 Predicts missing).
- Searching:** UK universities (0 shortlists), European universities (0 shortlists), Oxbridge (0 shortlists), Apprenticeships (0 shortlists, circled in red), College / Sixth Form (0 shortlists), Irish universities (0 shortlists).
- Exploring:** Careers library (Careers favoured), Subjects library (Subjects favoured), Know-how library (Guides favoured).
- Applications:** Courses (No courses added), Special opportunities (0 shortlists), UK personal statement (Subject added), Subject References (Overall Ref not finished / 3 Sub Ref, 3 not finished), CV / Resumé (Write CVs tailored for each roles), Notes for Reference writers.
- Connecting:** Unifrog events (Interact directly with experts), Talent pool (Not joined).

Log in and scroll  
down to the  
apprenticeships tile.



Read through this page – it tells you everything about apprenticeships and then scroll down to the bottom of the page and select next.



## What do you need to know about Apprenticeships?

### Apprenticeships

Competition	Some apprenticeship vacancies are very competitive. For example, National Grid received 16,500 applications for just 150 places on its School Leaver Programme – equivalent to 110 people for each place.
Prestige	In recent years, stricter rules have been put in place regarding what an apprenticeship is. In addition, new apprenticeships have been created for previously graduate-only professions, like becoming a solicitor. These changes have helped to increase the prestige of apprenticeships.
Earn while you learn	Unlike going to university where students normally accrue debt, apprentices are paid from their first day of training. If you do a degree apprenticeship, you will even have your degree paid for while you earn a salary - that's double savings!
Practice and theory	Apprenticeships typically consist of 80% on-the-job training and 20% studying. For some opportunities this means 4 days per week at the workplace and 1 day at a college, and for others this means you will work for about 10 months a year, then you'll spend 2 months just studying.
Types	<p>There are several types of apprenticeship. At any time there tends to be more vacancies at the lower levels of qualification.</p> <p><b>Traineeship:</b> Level 1 or Level 2 (equivalent to GCSEs or below). These last a maximum of 6 months; they are unpaid but you gain skills and qualifications.</p> <p><b>Intermediate:</b> Level 2 (equivalent to 5 GCSEs).</p> <p><b>Advanced:</b> Level 3 (equivalent to 2 A levels).</p> <p><b>Higher:</b> Level 4 and above (equivalent to Foundation degrees and higher).</p>
Degree apprenticeship	<b>Degree apprenticeship:</b> Level 6 or Level 7 (equivalent to Bachelor's or Master's degrees). As well as working on the job you study for a degree; you earn from day one and your tuition fees are paid by the employer.
School Leaver Programme	<b>School Leaver Programme:</b> Some employers run their own bespoke training programmes which give A level students the chance to gain a university degree and/or professional qualification (depending on the programme), while working for the company and earning a wage. Employers who do this include KPMG and PwC.
Standards	<p>Apprenticeships are split into different Standards which define the skills, knowledge, and behaviours required in a particular role. These Standards have been developed by expert employer groups known as 'trailblazers'.</p> <p>There are lots of Standards to choose from - from Beauty Therapy to Recruitment to Chartered Management.</p>
Jobs	Apprenticeships are jobs like any other type of job - so to secure one you need to impress the employer enough to want to recruit you. Bear in mind that often apprenticeship vacancies are only advertised for as long as the available spots take to be filled - so you have to be quick.
Finding them	Most apprenticeship vacancies will show on Unifrog when they are open for application. We also have lots of degree apprenticeships and School Leaver Programmes which may not be currently open, but you can still shortlist your favourites and regularly check the company websites to see if they are accepting applications. Look out for vacancies with an 'annual' deadline to identify them!

[next](#)[or go back](#)

Select the 10 standards you are interested in.  
or you can search by all vacancies by a single employer

Any of these Standards interest you?

Select up to 10 at a time by clicking the Standards you like.  
Or want to see [all vacancies at a single employer](#) ▾

Search by keyword

Alphabetical

Subject area

Vacancies

Salary

Jobs

Hours

Not many apprenticeships near you? Expand your search by looking at [all Standards](#) >

Standards (111):

Accounting

Adult care

Advertising and Marketing

Aerospace engineering

Agriculture

Allied health

Animal care

Animal farming

Architecture and Planning

Automation and Control engineering

Aviation ground operations

Banking

next ▶

or go back



How far do you want to travel?  
Narrow down your search **using the distance limits** below.

\* Your postcode DE56 4GS ([change?](#))

\* Choose radius

2 miles - 0 vacancies

5 miles - 1 vacancy

10 miles - 17 vacancies

20 miles - 43 vacancies

50 miles - 154 vacancies

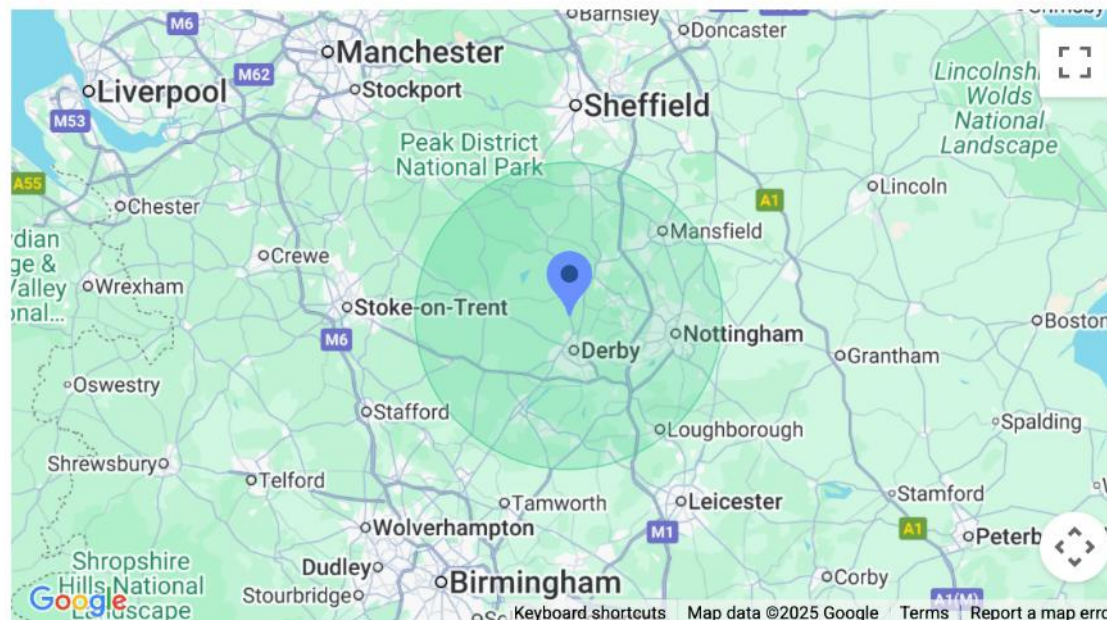
100 miles - 287 vacancies

200 miles - 551 vacancies

No Limit - 590 vacancies

and 64 nationwide vacancies

Select how far you  
want to travel



next ▶

or [go back](#)

Select the level you are interested in.

## Which of these Levels interest you?

Select by clicking the Levels you like.

Level

Vacancies

Not sure? Expand your search by looking at [all Levels](#) >

Levels (4):

**Intermediate** - Develop basic knowledge and skills for specific jobs. Formal qualifications are not usually required, though you might need English and Maths at GCSE level or to take equivalent functional skills training.

**Advanced** - Develop good knowledge and skills for specific jobs. You'll usually need to have a few GCSEs including English and Maths.



**Higher** - Develop high knowledge and skills for specific jobs. You'll usually need to have GCSEs including English and Maths, and you'll often need an A level or equivalent qualification that is relevant for the role.



**Degree apprenticeship** - Develop high skills for a specific job, while also getting a related Bachelor's or Master's degree. You'll usually need to have achieved good grades on A levels or equivalent qualifications that are relevant to the role.



They are shown by start date – you need starting in a while. Then select the ones you are interest in looking at.



## Starting very soon (10)



Within 4 weeks



 **Semi-Senior Accounts Apprentice**  
 THE TAX PARTNERSHIP (DERBY) LTD  
 Distance: 4 miles


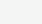
 **Apprentice Payroll Officer**  
 University Hospitals of DERBY and Burton NHS Foundation Trust  
 Distance: 5 miles



 **Finance Apprentice**  
 DISABILITY DIRECT  
 Distance: 6 miles


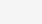
 **Apprentice Payroll Assistant**  
 KLN ACCOUNTANCY SERVICES LIMITED  
 Distance: 6 miles

 **Finance Apprentice**  
 K B EVENT LTD  
 Distance: 10 miles

 **Apprentice Accounts Assistant**  
 SHREDALL (EAST MIDLANDS) LTD  
 Distance: 13 miles



 **Assistant Management Accountant Apprentice**  
 Langcroft Group  
 Distance: 14 miles



 **Accounts Apprentice**  
 JSB Accountants  
 Distance: 16 miles

 **Accounts/Finance Assistant Apprentice (Level 2)**  
 AMSDEN YOUNG LTD  
 Distance: 19 miles

## Starting soon (3)

Within 1-3 months

 **Apprentice Payroll Administrator**  
 City and County Healthcare Group  
 Distance: 14 miles


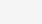
 **Network Cable Installer Apprentice**  
 FMS DATA CABLING LTD  
 Distance: 16 miles

 **Finance Apprentice**  
 RUSHCLIFFE CARE LIMITED  
 Distance: 18 miles

## Starting in a while (94)



In 4+ months


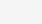
 **Civil Aerospace Business Management Degree Apprenticeship**  
 Rolls-Royce  
 Distance: 5 miles

 **Civil Engineering Degree Apprenticeship**  
 Atkins Realis  
 Distance: 5 miles


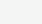
 **Electro-Mechanical Engineering Degree Apprenticeship**  
 Atkins Realis  
 Distance: 5 miles

 **Atkins Degree Apprenticeship - Civil / Structural Engineering**  
 Atkins Realis  
 Distance: 5 miles

 **Advanced Apprentice - Joliter**  
 National Grid  
 Distance: 6 miles

 **Advanced Apprentice - Overhead Lines**  
 National Grid  
 Distance: 6 miles

 **Advanced Apprentice - Overhead Lines (Projects)**  
 National Grid  
 Distance: 6 miles

 **Higher Apprentice - Planning & Design**  
 National Grid  
 Distance: 6 miles

Information is then given that you can then follow up by exploring the company website.



## Civil Aerospace Business Management Degree Apprenticeship - Degree



Employer: Rolls-Royce



Training Provider: University of Derby



Employer website



[earlycareer.applications@rolls-royce.com](mailto:earlycareer.applications@rolls-royce.com)



01332 242424



Jubilee House, Pride Park, St Christopher's Way, Derby DE24 8BJ

We serve more than a hundred customers in our Civil Aerospace Services business - keeping thousands of Rolls-Royce powered aircraft taking off and landing on time, at hundreds of airports, in almost every country of the world.

As an Aerospace Services Business Management Degree Apprentice, you'll learn how to manage the projects, plans, components, contracts and supplier relationships that are vital to our success. This is a fast-paced and growing part of our business, and there has never been a more exciting time to join us.

Join us and you'll be shaping the future, surrounded by brilliant individuals who'll inspire, challenge and support you to be yourself and at your best.

### Apprenticeship facts

Deadline	Applications open
Annual	Check their site
This apprenticeship is recruited for on an annual basis. Please check with the employer for more information about application open and close dates.	
Start date	Weekly wage
Check their site	£419
Hours per week	Duration
Check their site	4 years
Number of vacancies	Distance from home
Check their site	5 miles
Training provided	
BA (Hons) degree in Business Management	

### Employer & Training facts

#### Employer description

Rolls-Royce is a global company, providing integrated power solutions for customers in the civil and defence aerospace and marine markets. Our thinking powers the world and we equip people like you with the tools, training, support and experience to launch your ambitions and aspirations. Put simply, you could soon be on your way to a challenging and rewarding career that's full of potential.

#### Training provider Ofsted rating

-



# Getting in

---

## Qualifications

5 GCSEs at grade 4/C which must include Maths and English Language. Plus 3 A-levels at grade C, excluding General Studies or a Level 3 Extended BTEC at DDM, ideally in business-related subjects (equating to minimum 96 UCAS points). Obtained or predicted.

## Skills and personal qualities

We'd like to see how enthusiastic you are about developing a career at the heart of a global business. We want to see evidence of how you deliver on detail-focused projects. For example, you might tell us about a project you worked on in the past or how you used your skills to identify a major problem. Whatever the case may be, we need to know you're self-motivated and have a keen eye for detail. As well as being interested in all things business, it's important you understand how to solve problems. Tell us about a time when you put your skills to use to create a solution that worked. What new ways of thinking did you apply?



Degree apprenticeships in engineering, project management and business. Other level 4 apprenticeships. Any information will be shared. Entry requirements 3 x C at A-level or equivalent.



Degree apprenticeships in business and engineering. Other level 4 apprenticeships. Open day Saturday 11<sup>th</sup> October – link sent to students. Entry requirements 3 x C at A-level or equivalent.



Degree apprenticeships in quantity surveying and construction management. Application details to follow.



Degree apprenticeships in project management and chartered surveying. Application details to follow.



Degree apprenticeships (level 7) in finance. Applications opened October 2024. West Midlands based.



Degree apprenticeships and level 4 apprenticeships. Application details to follow.



Level 3 apprenticeships in production and maintenance. Applications open early October, open days in early November.



“Flying Start” degree apprenticeships applied for via UCAS at 6 different universities.



SEVERN

TRENT



PKF  
SMITH  
COOPER

TESCO



Various Level 2, 3 and 4 apprenticeships in Business, Operational and STEM based areas

Various levels – Business, Digital, Newtorks and Consumer sectors.

Smith Cooper – Accountancy

Tesco accountancy

Fluid Ideas – Darley Abbey

Rolls Royce cars

# Recruitment Processes

Open days / evenings

Application form and/or upload a CV

Video interviews

Online tests – logic / numeracy / reasoning

Assessment centres – interview / presentation / group activity

## Study skills and preparing for exams

How do you ensure that your child is prepared for this year and support them in planning their time and making study time as useful as possible?



# Be Organised!

---



- A Study Timetable and Weekly Progress Sheet are essential
- Study Folder & Refill Pad will help you to organise your studies
- Recommended Study for Year 13 :  
60 mins. per night plus homework



# Your Study Area...

---

## ***Make sure***

- the room is well lit
- It's free from distractions and noise  
(No mobile phones )
- You have everything you need to study  
(Calculators/ Books / Work books / Refill Pad)

# *Tips For Making Study Easier...*

---



Be

- Be active while studying: take notes – recite out loud – use flash cards – mind maps – test yourself

Take

- Take regular short breaks (5 - 10 mins. every 40 - 60 mins.)

Eat

- Eat properly – Take regular exercise – Reward yourself



*Remember....*

*Listening in class is vital*

*Review what was learned in class as soon as possible*

*Try and complete homework on the day it's given*

# Improving Memory...

---

Studies indicate that 66% of material is forgotten within 7 days if it is not reviewed or recited again by the student

---

88% is gone after 6 weeks

# *Tips For Making Study Easier...*

Plan  
in

Plan in advance what topic you are going to study

Break  
up

Break up tasks into small manageable sections (the contents page of a book is helpful for this)

Try

Try to base the topic around questions at the end of a chapter or the topics your teacher has advised you to study

Start

Start with the subject you find most difficult or dislike

# 4 Steps to Revising:

- Map → Organise where you need to be going...
- Filter → Highlight the key facts / info...
- Summarise → Create a mind-map (and pictureboard)...
- Activate! → Create a quizzes, crosswords, word-searches etc.

# *An Effective Memory Technique*

- Before starting a study period write down everything you know about the topic (even if its only a few words)
- Then open the book. Quickly read through the relevant section, taking brief notes (don't write sentences; only key words).
- ***Now comes the important part.*** Quickly test your knowledge by jotting down all you now know
- Then check your notes to see how you did (if you forget something write it down in red pen)

# *Effective Memory Techniques*

This method  
works for two  
reasons

*Because you call on  
your brain to retrieve  
the information before  
and after the session,  
your brain learns that  
this is information it  
needs to store*

*The act of testing  
yourself before and  
after gives you a clear  
idea of where the  
gaps in your  
knowledge are.*



# NO SHORT CUTS

Unfortunately there are no short cuts to learning your work but you can be smart about it.

Get organised, start early and be consistent.

Find what works for you and ensure you can concentrate – NO PHONES IS A MUST!



## Looking after them

- It will get stressful as exams approach – on top of exams a big change is coming that they cannot control but ensuring that they view this as exciting and highly supported will really help.
- Talk to them regularly about how they are feeling and what they have coming up. If you are concerned about them get in touch and we will help.
- Our website has lots of links to places you can get help too.



# Support should they need it

Sixth Form are always here to help you – get in contact  
Other key resources for mental health:

**YOUNG MiMDS**  
fighting for young people's mental health

**kooth**

kooth.com

 **Trent PTS**  
*Improving access to  
psychological therapies (IAPT)*

 **TALKING**  
MENTAL HEALTH  
DERBYSHIRE

**ChildLine**  
0800 1111 

Derbyshire 24/7 mental  
health support line on  
0800 028 0077

"It's alright to  
ask for help"

**SAMARITANS**

 **116 123**

We're here  
to help...

Get in  
touch



# External Support



## Get in touch with our Parents Helpline

- Our Parents Helpline offers vital advice and guidance to parents/carers who are concerned about their child's mental health.

We can give you advice on:

- how to access support
- navigating services for your child
- practical techniques that can help you and your child
- signposting to other organisations
- If you are a parent/carer in need of some help, please get in touch.

Specialist Child and Adolescent Mental Health Services

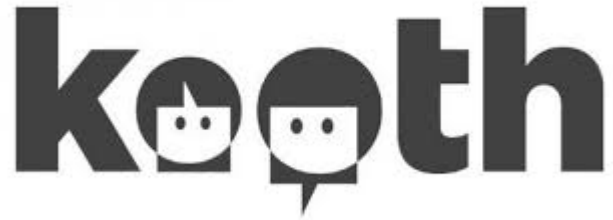


## Derbyshire Mental Health Support Line

[Derbyshire Mental Health Support](#)

[Line](#) tel: 0800 028 0077. Mental health support line for Derbyshire people of all ages. Open 24 hours per day, 7 days per week.

# More external resources



provides free, safe and anonymous mental health and emotional well-being online support for young people aged 11 to 25.



offers free online counselling and emotional wellbeing support for parents and carers of young people.

# Important dates

- Parents evening – 5th February 2026
- Mock Examinations - 5th - 16th January 2026
- Reports – 21<sup>st</sup> November 2025
- First A level provisional date -11<sup>th</sup> May 2026
- PROM – Friday 8th May 2026