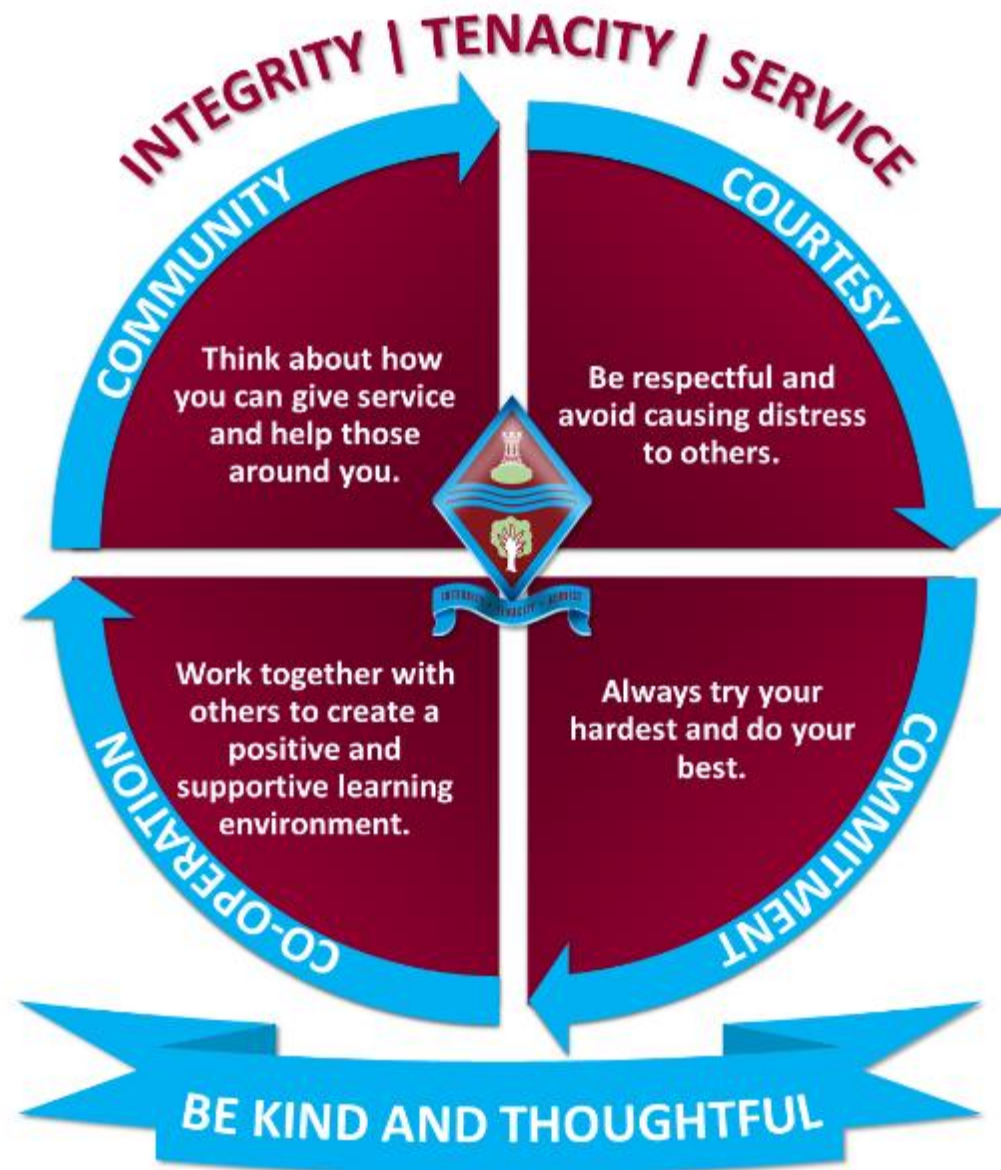




Year 9 Information Evening

Senior School
The Ecclesbourne School
24th September 2025





A broad and balanced curriculum that develops the knowledge and skills pupils need to thrive now and for a fulfilling future



Develop pupils' resilience and confidence in themselves and their capacity for growth



Ensure pupils feel valued, value others and learn to work together to make a positive contribution



Ensure pupils stay safe and healthy in mind and body



Develop creativity in an innovative learning environment



*Appreciate the spiritual, moral, social and cultural richness
of the world at large*



The Ecclesbourne School strives to be a successful and caring learning community that inspires individuals to meet the challenges of the future



Academic Performance



THE SUNDAY TIMES

**SCHOOLS GUIDE
2025**

**TOP 10
STATE SCHOOL FOR
ACADEMIC EXCELLENCE
EAST MIDLANDS**

**THE ECCLESBOURNE SCHOOL
TOP 10 STATE SCHOOLS FOR
ACADEMIC EXCELLENCE
AWARD**



Results - Year 11

	2017	2018	2019	2023	2024	2025
% 5 A-C (9-4)	90	89	93	86	86	91
% 5A-C (9-4) EM	86	84	91	84	82	83
A*- A (9-7)	38	25	38	32	34	35
% A*-C EM (9-4)	87	86	91	86	86	87
% A*-C EM (9-5)	73	64	72	68	67	71
% Ebacc (4+)	44	45	43	46	52	50
P8	+0.2	+0.4	+0.6	+0.4	+0.46	+0.74
A8	58	55	59	57	57.32	58.31



Year 9 Tutors in Senior Section

- 9B Mrs H Heanue
- 9C Ms L Mooney
- 9L Mrs K Goddard
- 9R Ms J Colgan
- 9E Mrs V Windle
- 9N Mr D Hewitt/ Mr E Swindell
- 9S Mrs A Street
- 9U Miss L Bailey

Head of Year

Mrs Emma Stott

Progress leader

Mrs Rachael Laughlin





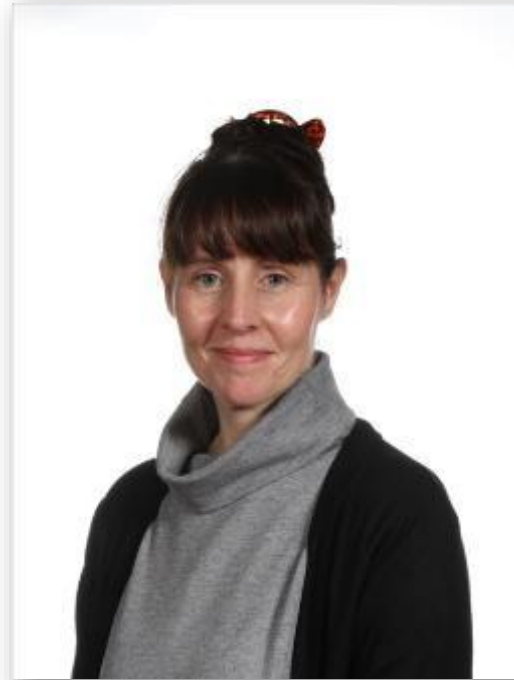
Pastoral Support Team



Mrs Laughlin
Pastoral Support



Mrs Monk
Pastoral Support
and Attendance
Officer



Mrs Tanser
Pastoral Support
and School Nurse



Mrs Wiggins
SENCO



Year 9 Vision

A story of kindness, friendship, courage and hope.

An unlikely group of friends goes on a journey to find home.

*The Boy, the mole,
the fox and the Horse*



Charlie Mackery

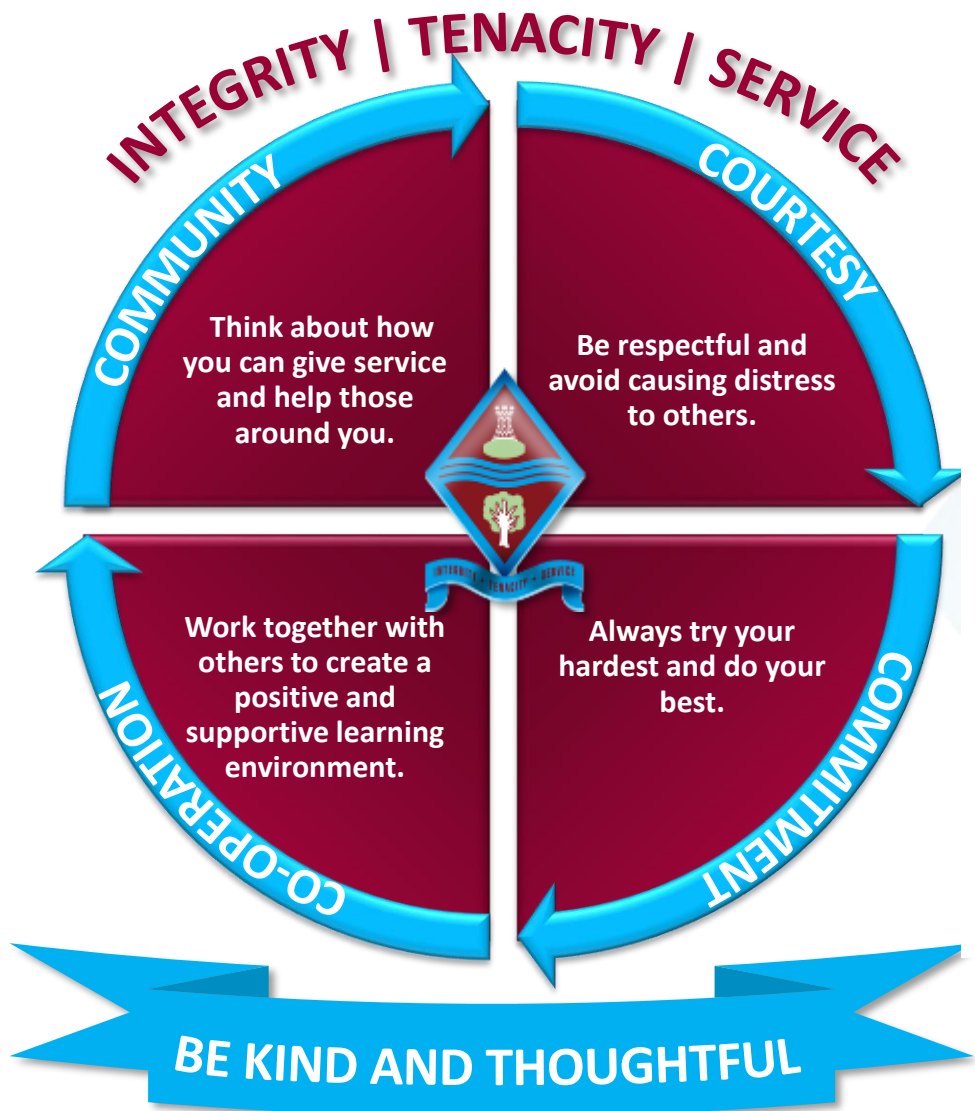


Our Values

- We are a large and inclusive school community with respect and tolerance at the heart of our core values.
- We expect each and every child to treat others utilising these core values.
- Where a pupil's actions fall short of expectations we will address this through a combination of sanctions and learning opportunities.
- The school is proud of its excellent exam results and the progress that pupils make during their time at our school. These results and progress are a tribute to the excellent teaching and learning and the hard work of pupils.
- Where a pupil impacts the learning of others then action will be taken.



Our theme for this term is Community



The Ecclesbourne School Inclusive Language Charter

Our intention:

At The Ecclesbourne School we strive to have an inclusive community where difference is celebrated, and everyone has a sense of belonging. This is why we have a zero tolerance of derogatory language which reinforces negative stereotypes related to the protected characteristics, including gender, race, sexuality, and physical ability. We ask all members of the school community to think carefully about the language that they use so that it doesn't include any unconscious bias. In addition, all staff and students are expected to be an upstander, and to call out any language which is not inclusive.

This charter sets out the ways in which we can fulfil our Inclusive Language Charter.

What we need to do:

1. Never use insulting language

Sexist, homophobic, transphobic, racist, ableist and any other language used to insult another person is not tolerated at our school. There are no situations where using this language is considered a joke or 'banter.'

2. Be aware of the difference between sex and gender

We understand that sex relates to the biological and physiological characteristics defining men and women; and gender refers to social constructed roles, behaviours, and attributes. We respect everyone's right to be addressed by their chosen pronouns and never deliberately misgender anyone.

3. Be aware of what microaggressions are

Whilst we can easily recognise offensive language, microaggressions may be harder to spot. We need to know that saying things such as, 'where are you actually from?' 'doesn't your religion mean you can't do that?' can and do offend which creates barriers within our community.

4. Issue appropriate sanctions

When offensive language is used by students, staff will follow procedures whereby a student receives a sanction. We have a zero-tolerance policy on the use of offensive language at our school. If a member of staff uses offensive language, we follow procedures which are guided by our DBI policy.

5. Educate

We have PDC lessons, assemblies, as well as student-led awareness groups which all help us to understand the power of language and the damaging effects that it can have. A student who uses offensive language will receive further education, as means of reformation and restoration.

6. Be upstanders

There are numerous ways to be an active citizen to help make our school more inclusive. Teachers, Form Tutors, Head of Year, Progress Leaders, DSLs, the DSL, the Headteacher and Tootoot are all means of staff and students holding others to account by reporting the use of offensive language.





[My priorities](#) [Knowledge & resource hub](#) [About us](#) [Media centre](#)

[Blogs >](#)

Why attendance remains my priority

7 August 2025



ATTENDANCE


WHY IS IT IMPORTANT?

ABSENCE FROM SCHOOL

Children are required by law to attend school 190 days per year. The Government states that every pupil's attendance should be at least 95%.

How do YOU measure up?


Attendance	Days Absent	Weeks Absent	Lessons Missed
95%	9 Days	2 Weeks	50 Lessons
90%	19 Days	4 Weeks	100 Lessons
85%	29 Days	6 Weeks	150 Lessons
80%	38 Days	8 Weeks	200 Lessons
75%	48 Days	10 Weeks	250 Lessons
70%	57 Days	11.5 Weeks	290 Lessons
65%	67 Days	13.5 Weeks	340 Lessons



89% & Below
Drastic effect on academic achievement

95%-90%
Cause for concern

100%-96%
Excellent



[Media Centre](#)

[Media Centre](#) > [Press releases](#) > [2025](#) > [September](#) > [Missing school](#)

PRESS RELEASE

Missing school linked to higher mental health, study finds

9 September 2025



Our Attendance Process

- Set high expectations for attendance
- Monitor data looking for patterns of absence for students and sub-groups
- Maintain contact with families and follow statutory guidance' Working together to improve school attendance 2024'.
- Listen and understand where problems emerge
- Facilitate and formalise support to improve attendance
- Liaise with the local authority





Personal Development

PDC curriculum

Leadership
opportunities

Wider
curriculum

Assemblies

Pastoral support

Our VALUES



Leadership Opportunities

To get involved in:

- Student Council
- Well-Being Ambassadors*
- Anti-Bullying Ambassadors*

To get support from:

- 6th form
- House Captains





Rewards

- Merits
- Prize Giving
- Roll of Honour
- Merit/Colour Ties
- Governors Awards Evening
- Breakfast celebrations
- Postcards home

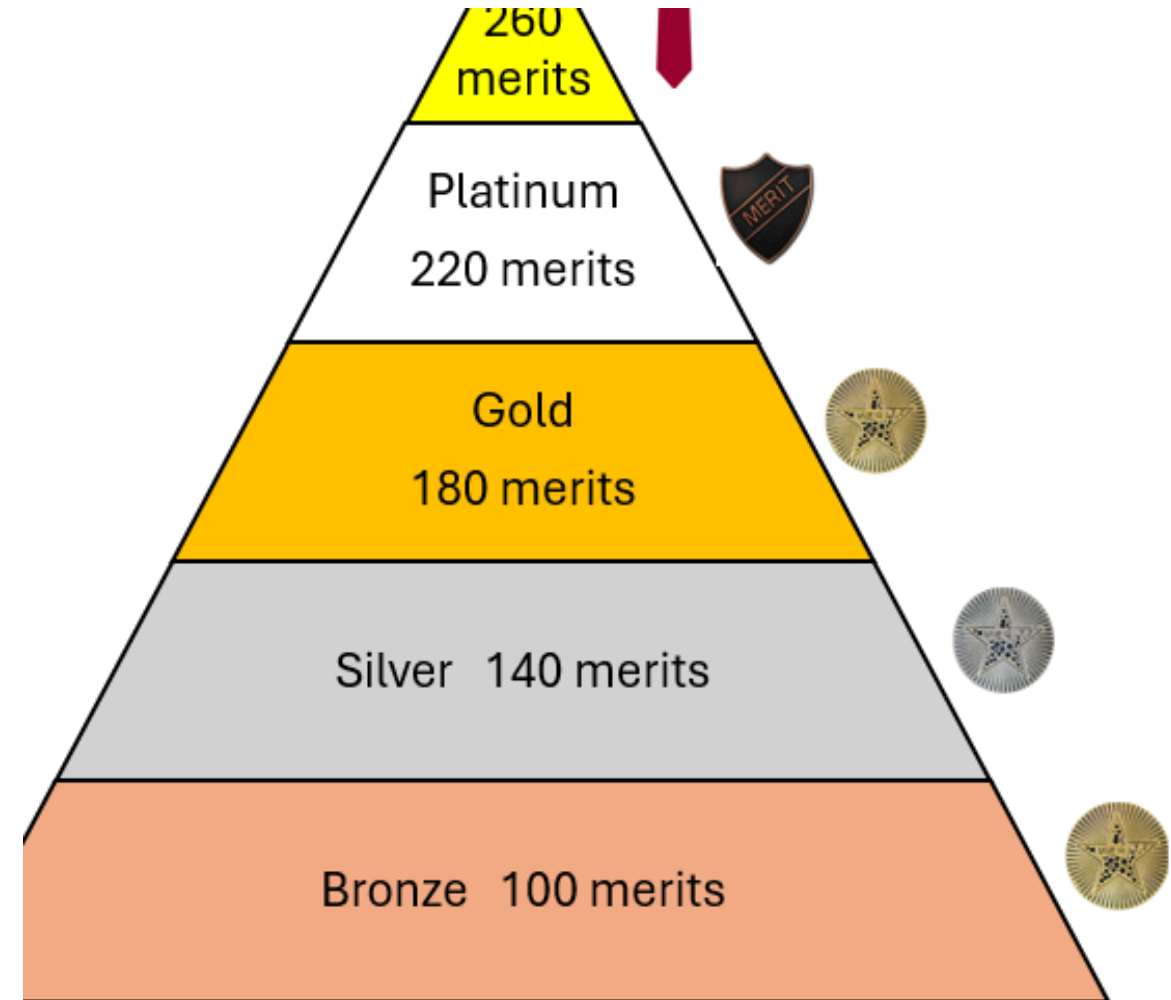




Merits & Rewards

We are still running the Merits for rewards this year! We will be offering the same rewards as last year, including:

- Praise
- Phone call home
- Pin badges
- Postcards
- Rewards trips
- Form breakfasts
- Golden ticket early lunch pass
- Merit ties





Extracurricular Activities

- Sports teams and clubs
- Music
- Drama
- House plays
- Trips and Visits
- And there is a wide range of subject related clubs to go to!





Extra curricular activities

Activity	Supervisor	Time
Brass Group	Mr Knapp	Monday after school;
Badminton	Donna Kellogg	Monday before school;
String Group	Mr Dickson	Monday lunchtime;
Girls Football	Mrs Street	Monday lunchtime;
Nightingale Dance Rehearsal	Miss Minto	Monday lunchtime;
The Secret Garden Club	Mr Minton	Monday lunchtime;
Drama club	Mrs Taylor	Tuesday lunchtime;
Maths club	Mrs Rafferty	Tuesday lunchtime;
Men's Choir	Mr Knapp	Tuesday lunchtime;
Music Theory Club	Mr Swindell	Tuesday lunchtime;
Brindley Dance Rehearsal	Miss Bailey	Tuesday lunchtime;
Boys Football	Mr Gosden	Tuesday lunchtime;
Learning Support Homework Club	Mrs Naylor	Tuesday lunchtime;
Chamber Choir	Mr Swindell	Tuesday after school;
The Secret Garden Club	Mr Minton	Wednesday lunchtime;
Circus skills	Mr Forster	Wednesday lunchtime;
Pokemon Club	Mr Cuthbert	Wednesday lunchtime;
Learning Support Gardening Club	Mrs Yallop	Wednesday lunchtime;
Orchestra	Mr Knapp, Mr Dickson, Mr Swindell	Wednesday lunchtime;
Humanities Homework Catch up	Mrs O'Donovan	Wednesday lunchtime;
Fitness Club	Mr Ourabi	Wednesday lunchtime;
Maths - Review, Catch-up and Homew	Mrs Arnold	Wednesday lunchtime;
Boys Football Matches	Mr Gosden	Wednesday after school;
Humanities Hub	Mrs O'Donovan	Thursday lunchtime;
Cheerleading Club	Miss MacCormick	Thursday lunchtime;
Language Support	Mrs Howells	Thursday lunchtime;
Lego Club	Mr J Poplawski	Thursday lunchtime;
School Choir	Mr Swindell	Thursday lunchtime;
Chantry Dance Rehearsal	Mrs Hyndman	Thursday lunchtime;
Science Experiment Club	Mrs Naylor & Mrs Yallop	Thursday lunchtime;
Netball	Miss Minto	Friday before school;
GCHQ competition club	Mrs Daly	Friday lunchtime;
Warhammer and D&D	Mr Hewitt and Mr Shaw	Friday lunchtime;
Swing Band	Mr Knapp & Mr Dickson	Friday lunchtime;
Drama Club	Mrs Shuttleworth	Friday lunchtime;
Flamsteed Dance Rehearsal	Mrs Pestell	Friday lunchtime;
Folk Band	Mr Dickson	Friday after school;



Key dates (Please note these can be subject to change)

- 25th Sept Maths Olympiad Girls Challenge (Set 1)
- 26th September 2025 Prize Day
- 8th October community tea party
- 14th October WRAT (Wellbeing, Record of Achievement and Target setting) review
- 3rd November 2025 Whole School Closure Day
- 10th-13th November 2025 Hindu temple trip
- 17th -21st Nov GCHQ competition
- 26th November 2025 House Play performance
- 17th December Christmas Concert 2025
- 7th Jan Enterprise day
- 8th Jan GCSE Options evening to parents
- 13th January GCSE Options To students
- w/c 2nd February GCSE choices interviews
- February 2025 Stars in Your Eyes.
- 12th Feb Half term
- 2nd March Parents eve BCLR
- 9th March Parents eve ENSU
- 17th March WRAT (Wellbeing, Record of Achievement and Target setting) review
- 20th March Interim reports issued
- March – Battle of the bands
- 17th April 2025 Whole School Closure Day
- 20th April Drama evening event
- **22nd-26th June End of Year exams**
- 7th July Sports day
- 15th July Health day
- 17th July Rewards trip day
- w/c 20th July Full reports issued
- 20th -24th July Outward Bound trip



Supporting your Children with Behaviour

- Make sure your child has the correct equipment including: stationery, a fully charged laptop and subject specific supplies, e.g. PE kit or ingredients.
- Download the Satchel One App to keep track of your child's homework. This is a great way to help them keep on top of their workload!
- Ensure they arrive to school on time.
- Inform the Head of Year if there is something that is worrying your child. This can stop situations escalating and support can be put in place.
- Talk to your child about their behaviour as there might be an underlying reason as to why they are not adhering to the school rules.
- Support the school in its behaviour decisions, pupils will thrive where everyone works together.



Academic Support with work

- Students should talk to their subject staff.
- Talk to their Head of Year or one of the wider team or their form tutor.
- The library is available at lunchtimes and after school until 4.45pm.
- We will also identify students throughout the year and offer them some subject specific tutoring.
- We can also arrange for mentors.
- Revision sessions are offered by a range of subjects as exams get closer.





Sanctions

- To support the management of good classroom behaviour, pupils will be given a chance to correct their behaviour, but if the behaviour persists a teacher detention will be issued.
- Sanctions which staff may use include: verbal reprimand; detention; a written apology or reflection; lesson removal; missing break time; extra work or repeating unsatisfactory work until it meets the required standard; or school-based community service.
- Sanctions which pastoral leaders may use include: loss of privileges – for instance, the loss of a position of responsibility or not being allowed to participate in a non-uniform day or extra-curricular activity; internal seclusion; being placed “on report” for monitoring for behaviour, uniform or punctuality.



Strategic Leadership Team Involvement

- If a pupil continues to be disruptive, is defiant to the class teacher, is unkind to another pupil or uses discriminatory language then the pupil will be removed from the classroom by a member of the Strategic Leadership Team. This will result in a significant sanction and parents/carers will be informed.
- Where we continue to be concerned with a child's behaviour then parents/carers will be invited into school for a meeting to discuss the concerns, and a behaviour support plan can be put in place working with everyone's input so the plans have the best chance of succeeding.



The Detention System

- Section 5 of the Education Act 1997 gives schools the authority to detain pupils after the end of a school session on disciplinary grounds.
- **Teacher Detention:** 30 minutes during lunchtime or after school. Students will always be given enough time to have lunch and use the toilet.
- **Faculty Detention:** 60 minutes after school.
- **SLT Detention:** 60 minutes after school. This is usually held on a Thursday. These are set for serious misdemeanours and repeated failure to respond to sanctions. Parents will be informed and will be given 24-hours' notice of an after-school detention.
- For a more detailed look at our behaviour policy, please click on the link. [Behaviour Policy](#)



Safeguarding

- Mrs C Ourabi- Senior Deputy Head and DSL
- Three Deputy DSL's; Mr Quail, Mr Duncker-Brown, Mrs Weller
- Have a statutory duty to implement and follow KCSIE 2025
- Situations happen and school are on hand to support
- Work closely with external agencies
- Receive DV notifications within 24 hours





Chosen school charities

YOUNG MINDS
fighting for young people's mental health

- Show racism the red card
- Padley centre
- Young Minds





Mental Health Team

- Mrs Ourabi- Trained as a Senior Mental Health Lead.
- Most of Pastoral team is MHFA trained
- 2 Pastoral workers – Attendance and School nurse
- Not experts



MHFA England





Pastoral Support

Be
an
Upstander

Different ways to 'speak out'...

Pastoral Team, Teachers, Form Tutors

Well Being
Ambassadors

Anti Bullying
Ambassadors

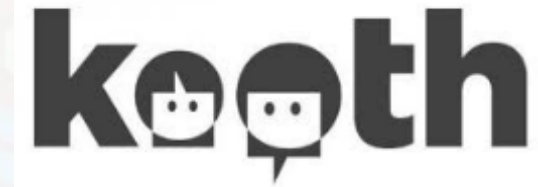
Welfare Hub

Tootoot

Other student
leaders

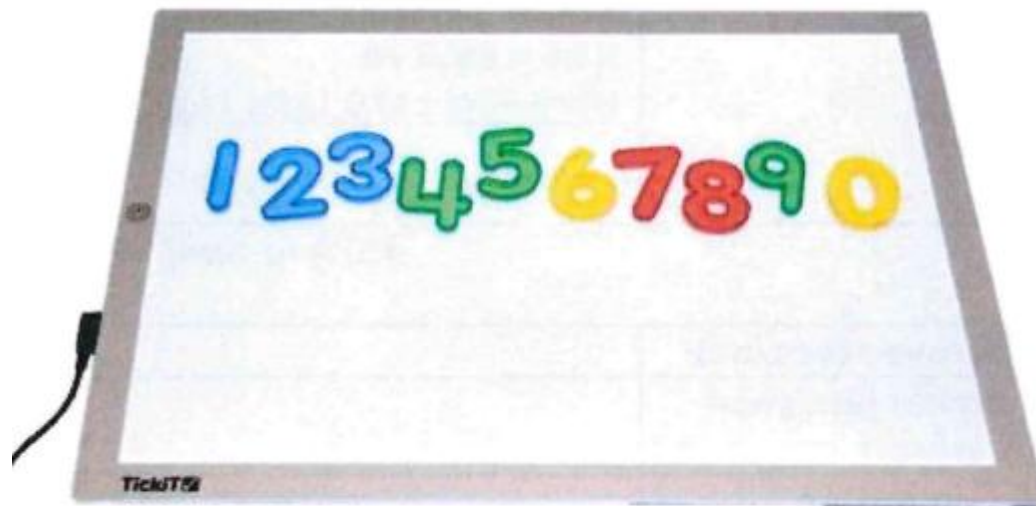


- Ask for **HELP!**





Support the PSFA





Special Offer

Flashforge Adventurer 5M Pro 3D Printer

Includes Training Centre Booklet

Flashforge Adventurer 5M Pro 3D Printer

Prices (including VAT)

Products	Price	Buy
Adventurer 5M Pro 3D Printer Speed 500g/h Print 100mm x 100mm x 100mm 17.4100	£395.00	Buy

Free Price: MP 5FA3MP

Classroom Packs

We also offer classroom packs which include 3D printers and filaments as a bundle at a lower price.

Products	Price	Buy
----------	-------	-----

Smart Materials Handling Box

E162.75 + VAT

Smart Materials Handling Box

CODE: 5000000000000000

Overview

- The Smart Materials Handling Box is a portable, lightweight, and easy to use storage solution for your school's smart materials.
- It is made from high-quality, durable materials and is designed to be used in a variety of settings.
- It is available in a range of sizes and colors to suit your needs.
- It is a great way to keep your smart materials organized and easy to find.
- It is a great way to keep your smart materials safe and secure.
- It is a great way to keep your smart materials clean and hygienic.
- It is a great way to keep your smart materials in good condition.

1

ADD TO CART

TECHISOFT

01745 535007 | sales@techisoft.co.uk

Sign In / Register

Your Shopping List

CAD/CAM - Tooling - Machinery - Tools - Materials - Tooling & More

Search the website

Home - Products - CAD/CAM - Tooling - Machinery - Tools - Materials - Tooling & More - Sign In / Register - Your Shopping List



Support the PSFA

Ecclesbourne PSFA
Invites You to

Quiz & Chips

£15/pp 6-8 per table

OCTOBER | 10
7:00 PM

for 7.30pm start @ Ecclesbourne
School Refectory

All bookings via
www.ticketsource.co.uk/ecclesbourne-psfa
Ticket price includes fish/vegetarian option
Booking fee applies

Queries to: events@ecclesbournepsfa.co.uk
Registered Charity No. 1047233



We are delighted to invite you to a magical evening of fine dining, entertainment and fundraising: all in support of our school community

Autumn Charity Ball

SATURDAY 15TH NOVEMBER 2025*
18:30 - 23:45
SHOTTLE HALL, DERBYSHIRE, DE56 2EB

BLACK TIE

Celebrate & Support!

Help Us Reach Our Goal!

We're raising funds to support projects and resources for Ecclesbourne School students such as modern resources to support the Technology Department's new BTEC in Engineering. This is in addition to an ever increasing number of bids from other departments within the school. Our fundraising target is £10,000.

Plus £2.50 booking fee.
Includes: Welcome drink on arrival
3-course dinner (please be seated by 19:15)

Tickets @ £65/pp



14+ process

- **14 + Evening**
- Meet Upper school team on 8th January 2026 for the post 14 options parents evening



Mr Duncker-Brown
Head of Upper School



Mr Sellers
Head of Year 11



Mrs Dodson
Head of Year 10

