

Welcome



THE ECCLESBOURNE SCHOOL
Information and Options Evening 2024



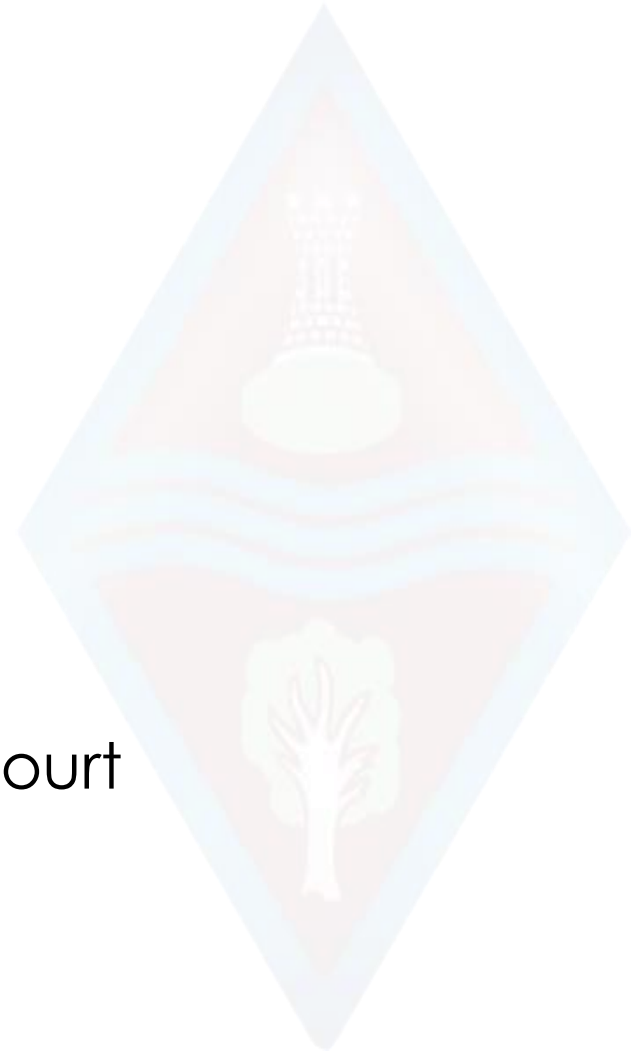
Year 9 Senior Section to date

- Summer Reward challenge
- GCHQ Languages competition
- Team building trip to Lea Green
- Serving at Community Tea Party
- Girls football team
- Blues Programme
- Padley centre donations
- Student council met Pauline Latham
- Form tutor reps met Gez Kinsella
- Weekly quiz with reward
- Photography competition
- Hindu temple trip
- Football & Hockey team
- House chess competition
- Ten pin bowling reward
- Musical performances
- House plays
- V&A challenge
- Enterprise day
- Army visit



Year 9 Senior Section upcoming

- Visit to Beth Shalom
- Prevent training
- Chelsea's story
- Outward Bound trip Wales
- Shakespeare festival
- Stars in your eyes
- Mock trial
- Residential trip to PGL Caythorpe court
- End of Year exams (June)





Pastoral Team



Mrs Ourabi
Head of Pastoral and
DSL



Mr Duncker-Brown
Head of Upper School



Mrs Green
Head of Diversity,
Equality, and Inclusion



Mr Sellers
Head of Year 10



Mrs Dodson
Head of Year 11



Mrs Stott
Head of Year 9



Pastoral Team



Miss Piper
Progress Leader and
Anti-Bullying Lead



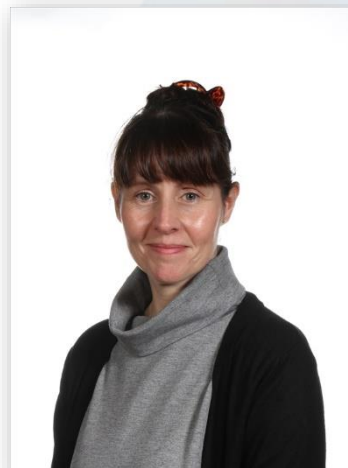
Mrs Parry
Progress Leader



Mrs Laughlin
Progress Leader



Mrs Monk
Pastoral Support and
Attendance Officer



Mrs Tanser
Pastoral Support and
School Nurse



Timeline 2024

23 rd January	Year 9 Tutors interview their students
25 th January	Parents' Evening 4.30-7.00pm – 9B, 9C, 9L & 9R
30 th January	Year 9 Tutors interview their students
1 st February	Parents' Evening 4.30-7.00pm – 9E, 9N, 9U & 9S
2 nd February	Tutors submit student options
W/b 5 th February	Pastoral Team interviews where required
9 th February	Final Options choices submitted





Vision & Aims





A broad and balanced curriculum that develops the knowledge and skills pupils need to thrive now and for a fulfilling future



Develop pupils' resilience and confidence in themselves and their capacity for growth



Ensure pupils feel valued, value others and learn to work together to make a positive contribution



Ensure pupils stay safe and healthy in mind and body



Develop creativity in an innovative learning environment



*Appreciate the spiritual, moral, social and cultural richness
of the world at large*



GCSE Performance





Results - Year 11

	2017	2018	2019	2023
% 5A-C (9-4)	90	89	93	86
% 5A-C (9-4)EM	86	84	91	84
A*- A (9-7)	38	25	38	32
% A*-C EM (9-4)	87	86	91	86
% A*-C EM (9-5)	73	64	72	68
% Ebacc(4+)	44	45	43	46
P8	+0.2	+0.4	+0.6	+0.4
A8	58	55	59	57



Derbyshire Ranking



86%

9-4 inc E & M



68%

9-5 inc E & M



57

Attainment 8








The Times Parent Power Survey

the times.co.uk

TIMES Today's sections ▾ Past six days Explore ▾ Times Radio Times+ My account ▾ Search

Power

Share     Save 

Best comprehensive schools in East Midlands

1. [Landau Forte College, Derby](#) (240=)
2. [Northampton Academy](#) (243)
3. [Walton Academy, Grantham](#) (273)
4. [The Ecclesbourne School, Belper](#) (274)
5. [East Leake Academy, Loughborough](#) (355)

Best private schools in East Midlands

1. [Leicester Grammar School](#) (68=)
2. [Nottingham High School](#) (76)
3. [Oundle School](#) (92=)
4. [Uppingham School](#) (103)
5. [Nottingham Girls' High School GDST](#) (114=)
6. [Leicester High School for Girls](#) (122)
7. [Derby High School](#) (126)

**"THIS MORNING, HE
HAD A STOMACH
ACHE...BUT LOOK
AT HIM NOW!"**



**MOMENTS
MATTER,
ATTENDANCE
COUNTS.**



HM Government

Search NHS school illness guidance to find out more.



**"THIS MORNING,
SHE WAS WORRIED
ABOUT SCHOOL...
BUT LOOK AT HER
NOW!"**



**MOMENTS
MATTER,
ATTENDANCE
COUNTS.**



HM Government

Search the Education Hub to find out more





- The link between attendance and attainment:
 - In 2018/19, just 40% of persistently absent (PA) children in KS2 achieved expected KS2 standards, compared with 84% of pupils who were regular attenders.
 - 36% of PA children in KS4 got 9 to 4 in their English and maths GCSEs, also compared with 84% of regular attenders.¹
- It's never too late to benefit from good attendance:
 - More than half (54%) of pupils who were PA in Year 10 and then rarely absent in Year 11, passed at least 5 GCSEs, compared to 36% of pupils who were persistently absent in both years.²

**MOMENTS
MATTER,
ATTENDANCE
COUNTS.**



- Attendance is important for more than just attainment:
 - Regular school attendance can facilitate positive peer relationships, which is a protective factor for mental health and wellbeing.³

**MOMENTS
MATTER,
ATTENDANCE
COUNTS.**

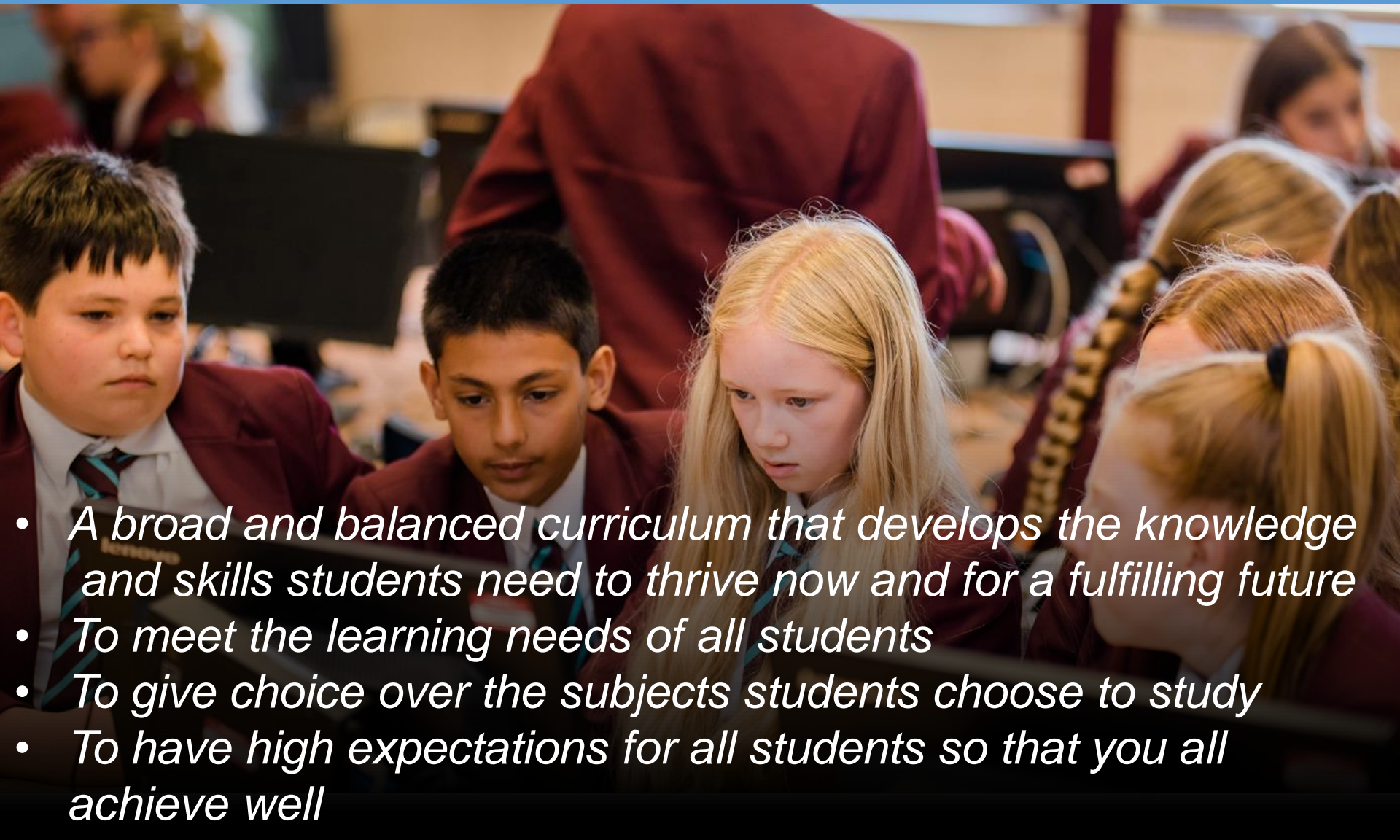
1: [The link between absence and attainment at KS2 and KS4, Academic year 2018/19 – Explore education statistics – GOV.UK \(explore-education-statistics.service.gov.uk\)](https://explore-education-statistics.service.gov.uk)

2: [Missing Children, Missing Grades | Children's Commissioner for England \(childrenscommissioner.gov.uk\)](https://childrenscommissioner.gov.uk)

3: [Mental Health and Attendance at School \(Chapter 1\) - Mental Health and Attendance at School \(cambridge.org\)](https://cambridge.org)



Our principles



- *A broad and balanced curriculum that develops the knowledge and skills students need to thrive now and for a fulfilling future*
- *To meet the learning needs of all students*
- *To give choice over the subjects students choose to study*
- *To have high expectations for all students so that you all achieve well*



GCSE and BTEC Courses and Grading

- All subjects graded 1 to 9.
- All subjects have terminal exams.
- Coursework in some subjects; especially BTECs.
- Marks awarded for accurate spelling, punctuation and grammar in a range of subjects.
- GCSEs are challenging; lots of content and rigour.
- Only a few subjects have Higher and Foundation Tiers.

How the new grades compare with old ones

Old grades	New grades
A*	9
A	8
B	7
C	6
	5 Strong Pass
	4 Standard Pass
D	3
E	2
F	1
G	1
U	U

Source: Ofqual

BBC

Level / Qualification Grade	Grade Equivalent
Level 2 / Distinction*	8.5
Level 2 / Distinction	7
Level 2 / Merit	5.5
Level 2 / Pass	4
Level 1 / Distinction	3
Level 1 / Merit	2
Level 1 / Pass	1.25





The English Baccalaureate

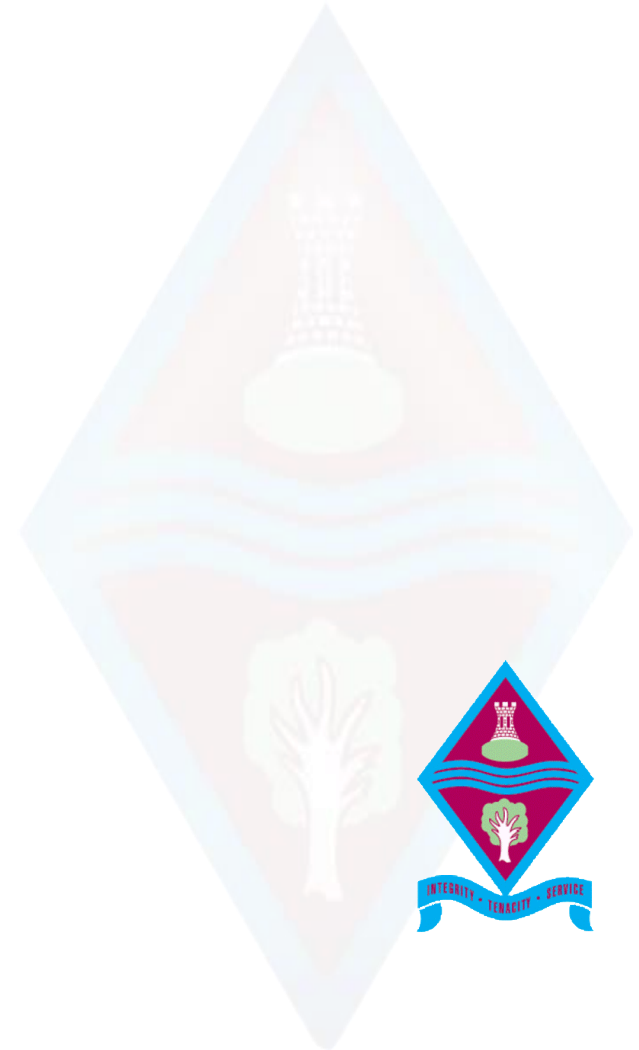
- The government expects that the English Baccalaureate is to be the default option for all students, but that schools should be able to determine the small minority of students for whom taking the whole EBacc is not appropriate.
- The Ebacc consists of:
 - English
 - Mathematics
 - Combined or Separate Sciences
 - French, German or Spanish
 - Geography or History





Ecclesbourne 14+ GCSE Options

SEPARATE SCIENCE ROUTE





Ecclesbourne Options – Separate Science Route Compulsory Curriculum – Learning Hours

YEAR 10

- 3 hours English
- 4 hours Maths
- 5 hours Science
- 1 hour PDC
- 1 hour PE

TOTAL= 14 hours

YEAR 11

- 4 hours English
- 4 hours Maths
- 7 hours Science
- 1 hour PDC
- 1 hour PE
- 1 hour Study/
Enrichment

TOTAL= 18 hours



Ecclesbourne Options – Separate Science Route

Compulsory Curriculum – Core PE/RS/PDC

English & English
Literature



Mathematics



Separate Science
(Biology, Chemistry & Physics)



Core PE & PDC/RE

Core 1
Compulsory
Curriculum

- Religious Education, Personal Development & Citizenship
 - Drugs and Health Education
 - Sex and Relationships
 - Careers
 - RE - Ethics
- Physical Education
- Enrichment
 - 1 hour of Thursday afternoon in Year 11 is either a Study Period or Duke of Edinburgh award.





Ecclesbourne Options – Separate Science Route

Core 2 Humanities and Languages – Learning Hours

English & English
Literature



Mathematics



Separate Science
(Biology, Chemistry & Physics)



Core PE & PDC/RE



Core 1
Compulsory
Curriculum

YEAR 10

- 3 hrs MFL
- 3 hrs Humanities

YEAR 11

- 2 hrs MFL
- 2 hrs Humanities





Ecclesbourne Options – Separate Science Route

2 Free Choices – Learning Hours

English & English Literature



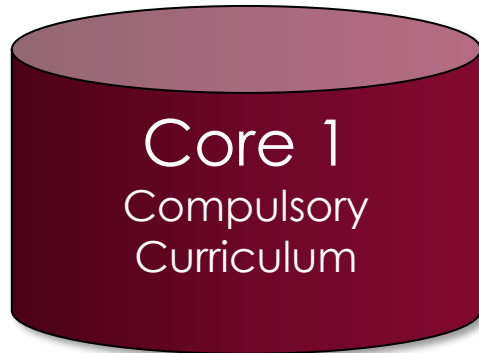
Mathematics



Separate Science
(Biology, Chemistry & Physics)



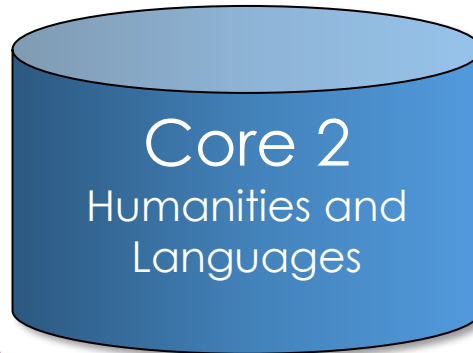
Core PE & PDC/RE



French *or* German *or* Spanish



History *or* Geography



2 Further Subjects

- Art & Design
- Drama
- Music
- GCSE PE
- French
- German
- Spanish
- Business
- BTEC ICT
- Cambridge National Sports Science
- Computer Science
- Food & Nutrition
- Design Technology; Res Mat, Graphics, Textiles
- Religious Studies
- History
- Geography
- BTEC Health & Social Care

Year 10

3 hrs Free Option 1
3 hrs Free Option 2

Year 11

2 hrs Free Option 1
2 hrs Free Option 2





Ecclesbourne 14+ GCSE Options

COMBINED SCIENCE; TRILOGY ROUTE





Ecclesbourne Options – Combined Science Route Compulsory Curriculum – Learning Hours

YEAR 10

- 3 hours English
- 4 hours Maths
- 5 hours Science
- 1 hour PDC
- 1 hour PE

TOTAL= 14 hours

YEAR 11

- 4 hours English
- 4 hours Maths
- 7 hours Science
- 1 hour PDC
- 1 hour PE
- 1 hour Study/
Enrichment

TOTAL= 18 hours



Ecclesbourne Options – Combined Science Route

Compulsory Curriculum – Core PE/RS/PDC

English & English
Literature



Mathematics



Combined Science



Core PE & PDC/RE

Core 1
Compulsory
Curriculum

- Religious Education, Personal Development & Citizenship
 - Drugs and Health Education
 - Sex and Relationships
 - Careers
 - RE - Ethics
- Physical Education
- Enrichment
 - 1 hour of Thursday afternoon in Year 11 is either a Study Period or Duke of Edinburgh award.





Ecclesbourne Options – Combined Science Route

Core 2 Humanities and Languages – Learning Hours

English & English
Literature



Mathematics



Combined Science



Core PE & PDC/RE

Core 1
Compulsory
Curriculum



YEAR 10

- 3 hrs Humanities

YEAR 11

- 2 hrs Humanities





Ecclesbourne Options – Combined Science Route

3 Free Choices – Learning Hours

English & English Literature



Mathematics



Combined Science



Core PE & PDC/RE

Core 1
Compulsory Curriculum



History or Geography

Core 2
Humanities



3 Further Subjects

- Art & Design
- Drama
- Music
- GCSE PE
- French
- German
- Spanish
- Business
- BTEC ICT
- Cambridge National Sports Science
- Computer Science
- Food & Nutrition
- Design Technology; Res Mat, Graphics, Textiles
- Religious Studies
- History
- Geography
- BTEC Health & Social Care

Year 10

3 hrs Humanities*
3 hrs Free Option 1
3 hrs Free Option 2
3 hrs Free Option 3

Year 11

2 hrs Humanities*
2 hrs Free Option 1
2 hrs Free Option 2
2 hrs Free Option 3

3 Free Choices



Remember students
should aim for
balance and choose
subjects that reflect
their interests and
aptitude

[Options | Ecclesbourne School](#)





Learning Support Option

Why might the workload be too heavy in Years 10 and 11?

- GCSEs are a big step up in terms of expectations.
- There is pressure from coursework and final examinations.
- Too much for some students.



How to reduce the workload?

LEARNING SUPPORT OPTION

- Reinforce learning in all subject areas.
- Support coursework.
- Additional work on literacy and numeracy skills.

Who?

Some students, but possibly not all, who currently having help in the Learning Support Faculty.

Learning Support have made recommendations.





No need to worry

There will be lots of help and advice from the Pastoral Team.

We will offer advice to ensure options do not close down future career choices or opportunities for further study.





There is plenty of help available!

Students can talk to:

- Form Tutor
- Head of Year
- Staff in Senior Section
- Staff in Upper School Office
- Careers Team

Parents:

- If you need help, or just want to talk through options with us then don't hesitate to pick up the phone and give us a ring or drop us an email.





AQA GCSE Business



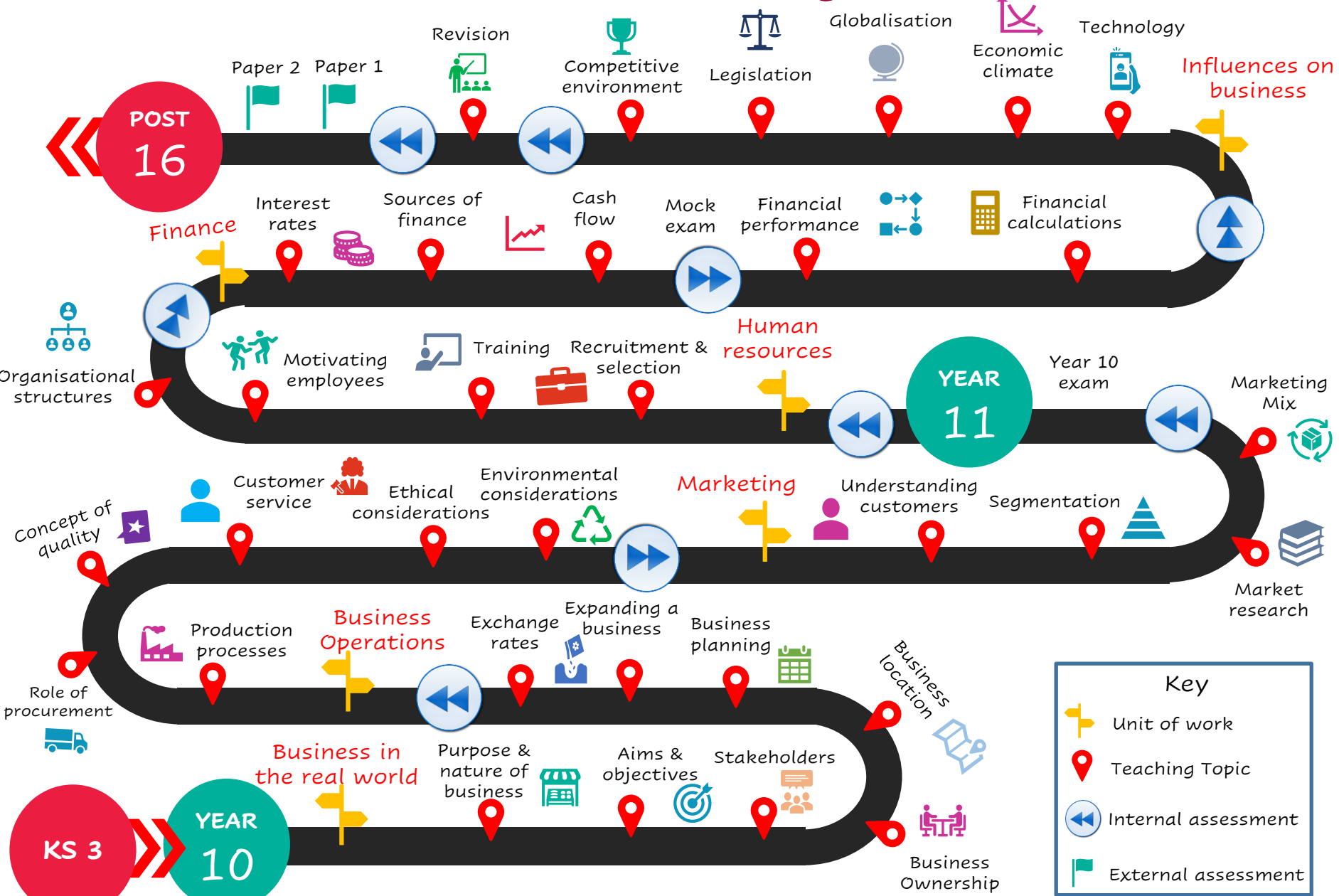


Why choose GCSE Business?

- A subject that relates to the world that you live in and are an active part of the business community as a consumer of goods and services sold by businesses.
- You will learn business concepts and theories that you can then apply to a real business situation.
- For example, you will learn about the different sorts of business types that someone could set up and then apply it to a specific situation.



AQA GCSE Business- Route through the whole course





Should you pick Business?

Do you enjoy understanding the world around you?

Would you like to the opportunity to explore theories and concepts in the most relevant way, through the context of events in the business and economic world?

Are you a critical thinker?





How is the course examined?

You will take 2 examination papers of 1 hour and 45 minutes each.

- The structure is the same for both, a mix of multi-choice, short and longer questions. The longest are 9 and 12 mark questions.
- In these you will look at choices a business could make and show that you can see the relevance of both and make a reasoned decision.
- For example, you may be asked whether a business should recruit a worker for a new role from inside or outside the business.

Paper 1

Business in the real world • Influences on business • Business operations • Human resources

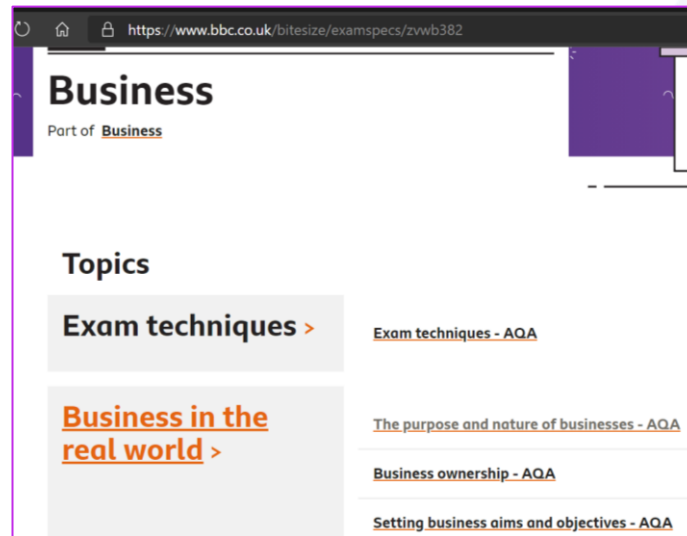
Paper 2

Business in the real world • Influences on business • Marketing • Finance





Find out more:



GCSE & A Level Teacher of Business – Miss Mooney (F3)

lmooney@ecclesbourne.derbyshire.sch.uk

Head of Business & Economics – Mrs Taylor (Sixth Form Centre)

KGTaylor@ecclesbourne.derbyshire.sch.uk



BTEC Tech Award

Health and Social Care

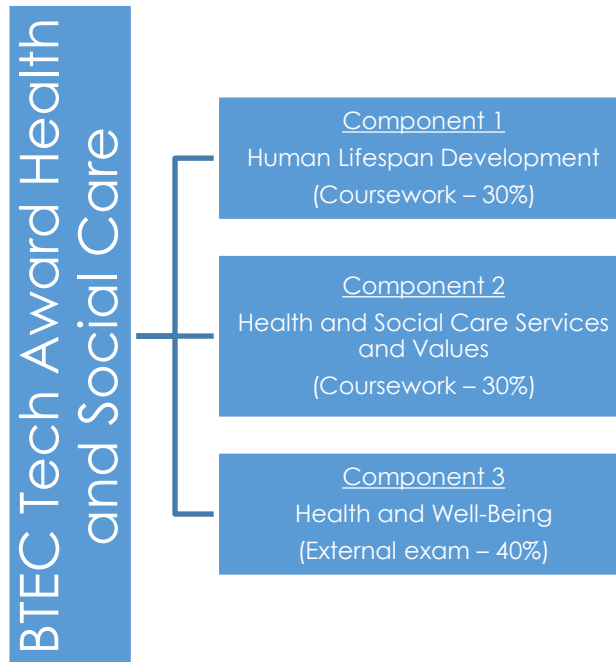
(Level 2)





Why might you choose to take a BTEC?

Course content



The Grades ...
Distinction*
Distinction
Merit (Level 2)
Pass (Level 2)
Merit (Level 1)
Pass (Level 1)

- Because it involves coursework so there is less emphasis on exam performance
- Because it has practical, vocational content





Component 1: Human Lifespan Development

Internally assessed
coursework
30% of final grade
Completed during Year 10



- Physical, intellectual, emotional and social growth from birth to late adulthood
- Factors (e.g. economic, social, physical) which affect human development
- Life events and changes such as divorce, bereavement
- Support for life events and changes





Component 2: Health and Social Care Services and Values

- Different health and social care services
- Barriers to accessing services (e.g. psychological, physical, economic)
- Care Values and how to demonstrate them



Internally assessed coursework, 30% of final grade completed in Year 11





Component 3: Health and Well-Being

- Lifestyle choices and well-being
- Health indicators
- Measures of health
- Treatment plans



Externally assessed exam in summer of Year 11
40% of final grade





Is this the course for me?



- Girls and boys take the subject
- If you're interested in a **future career** in the Health and Social Care sector this course is extremely valuable
- It helps you with **meeting deadlines** as you get used to doing **coursework**



GCSE Design and Technology

Graphics/Resistant
Materials



What do all these items have in common?





Both courses- Graphics and Resistant Materials:

1. Offer an opportunity to apply maths, science and problem solving skills to a range of mini projects and practical work in both Year 10 and 11.
 2. 50/50 Split of coursework (NEA) and exam
 3. Exam is sat in the summer at the end of Year 11.
 4. NEA starts in the summer term of Year 10 and runs till Easter of Year 11.
 5. NEA, you get to choose what you design and make from one of three contexts e.g. Storing and securing items for 2023-24.
 6. Cover three main areas in the exam:
 1. Core principles- All materials knowledge
 2. Specialist principles
 3. Design and make principles.
- [What is D&T – and why do we need it? \(youtube.com\)](https://www.youtube.com/watch?v=...)



So what is the difference?

Graphics

- Material focus: Papers and boards and plastics.
- CAD: Photoshop, 2D design, TinkerCAD
- Design/projects: Marketing materials, packaging and Point of sale, branding/merch, Interior design models and product design

Resistant Materials

- Material focus: Timbers, plastics and metals.
- CAD: TinkerCAD, Fusion 360 and 2D Design
- Design/projects: Furniture, storage devices, decorative items, Interior design, engineering, Architecture, Product design.



Project Work:

- Graphics Projects:



- Resistant Material Projects:





GCSE Computer Science

BTEC Tech Award in Digital Information Technology



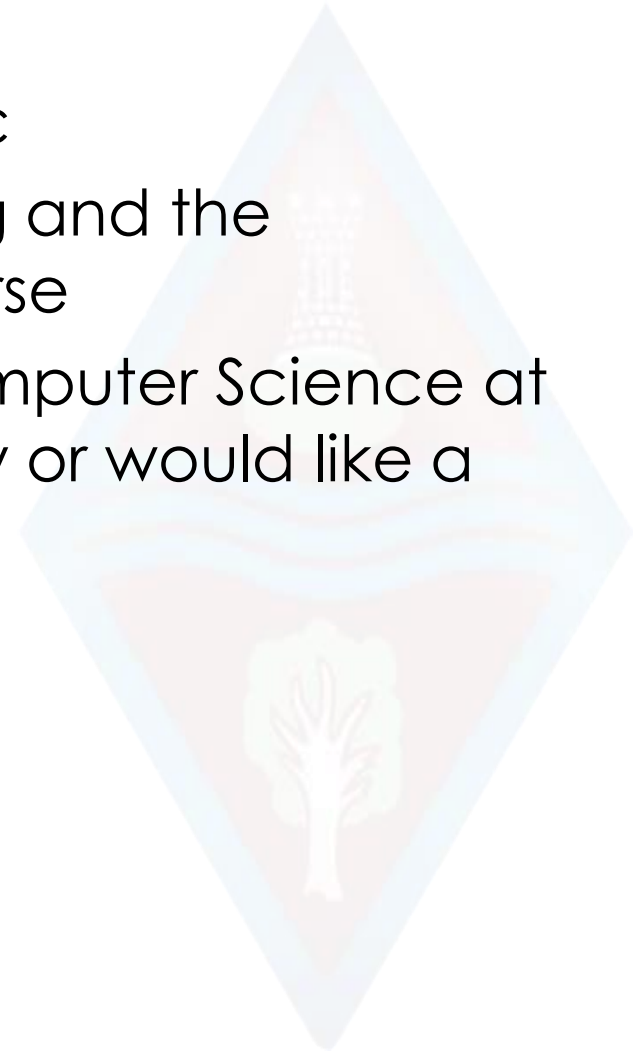


- Learn to program using Visual Basic
- Brilliant if you enjoy problem solving and the programming elements of the course
- Important if you wish to pursue Computer Science at A Level, wish to study it at University or would like a job which requires programming

100% exam with 2 papers:

Paper 1: Programming

Paper 2: Computer Science Theory





BTEC Tech Award in Digital Information Technology

- Learn how to make professional user interfaces in PowerPoint and also how to make complex data models using Microsoft Excel
- Brilliant if you enjoy doing coursework rather than just focussing on an exam
- Important if you wish to develop your ICT skills further but do not wish to learn how to program.

2 Pieces of course work done in class worth 60% of the final grade

1 theory exam worth 40% of the final grade



GCSE Food Preparation and Nutrition aims to equip students with the knowledge, understanding and skills required to cook and apply the principles of food science, nutrition and healthy eating.





GCSE Food Preparation & Nutrition: Content

- The main emphasis is the development of strong practical cookery skills and techniques and a good understanding of nutrition.
- You will discover the essentials of food science, nutrition and how to cook. You will understand the huge global challenges that we face to supply the world with nutritious and safe food.
- It is another step towards creating a healthier society and improving the nation's cooking skills as well as setting some students on the path to careers in the food and hospitality industry.



GCSE Food Preparation & Nutrition: Assessment

Food Preparation and Nutrition written exam

- 1 hour 30 minutes **50%** of total GCSE

Food Investigation Task (Scientific investigation)

- 45 marks
- Non-examined assessment (NEA) **15%** of total GCSE

Food Preparation Task (Prepare 3 dishes in 3 hours)

- 105 marks
- Non-examined assessment (NEA) **35%** of total GCSE





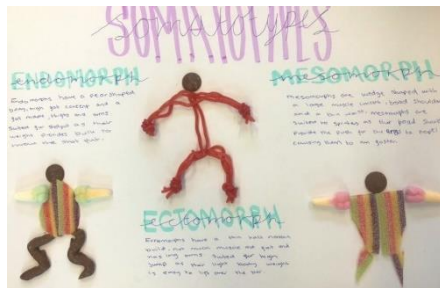
Course Overview and Assessment

There are 3 components to GCSE Physical Education:

Component 1 - The Human Body and Movement in Physical Activity and Sport

- Movement analysis
- Physical training
- Applied anatomy and physiology

Written exam 1 - 1 hour 15 mins (30%)





Component 2 - Socio-Cultural Influences and Well-being in Physical Activity and Sport

- Health, fitness and well-being
- Sports psychology
- Socio-cultural influences
- Written exam 2- 1 hour 15 mins (30%)

Component 3 - Non-Exam Assessment

- Practical assessment in individual and team activities 30%
- Written Coursework 10%





Practical Assessment

Students have to be assessed in 3 activities from the list below. One activity must be from the individual list and one from the team list. The third activity can be from either list. The written coursework is on one sporting activity from the specification.

- **Team Activities**

Football, Badminton (Doubles), Tennis (Doubles), Cricket, Hockey, Netball, Rugby (League or Union), Squash (Doubles), Table Tennis (Doubles), Dance (Group Dance).

- **Individual Activities**

Athletics, Skiing or Snowboarding, Gymnastics, Trampolining, Dance (Solo performance), Swimming, Tennis (Singles), Badminton (Singles), Table Tennis (Singles), Squash (Singles).





OCR Cambridge National Certificate in Sport Science Level 2

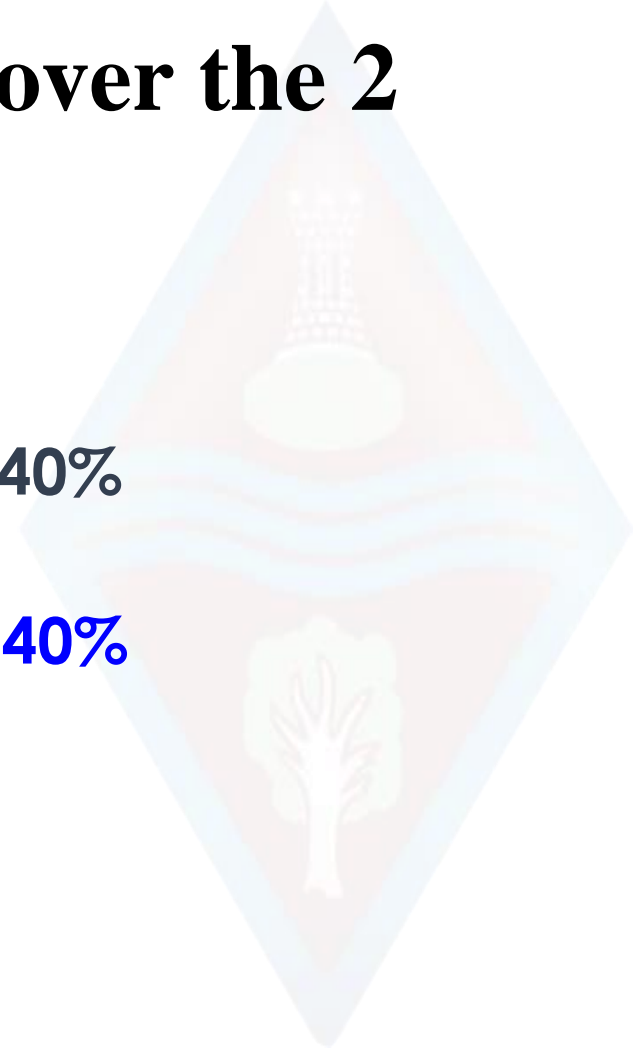


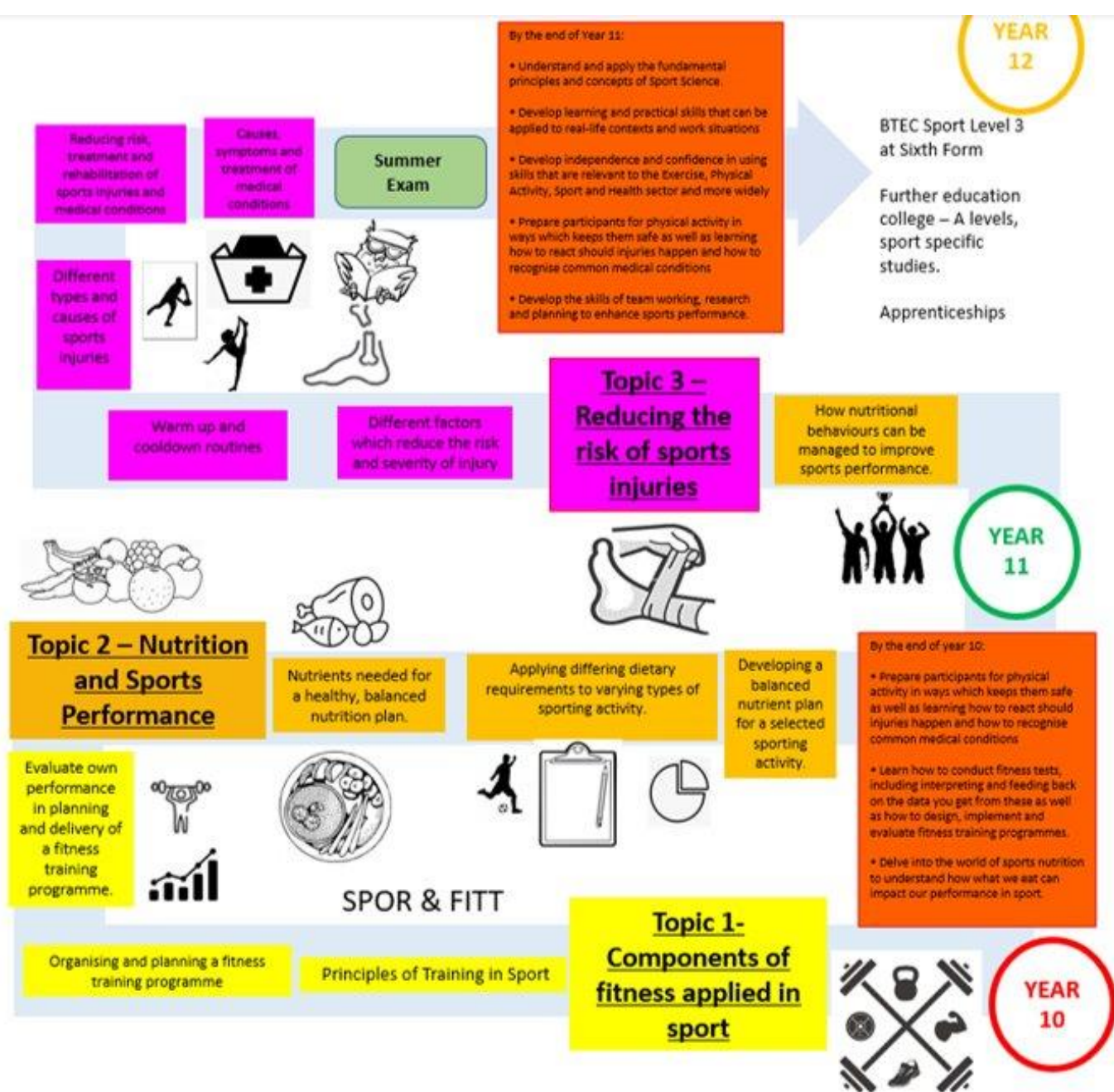


Course outline

Four units to be completed over the 2 years:

- Unit R180
Reducing the risk of sports injury's 40%
- Unit R181
Applying the principles of training 40%
- Unit R185
Sports Nutrition 20%







UNIT 1: Reducing the risk of sports injuries and dealing with common medical conditions

This unit is assessed by an exam.

By completing this unit, you will prepare as a participant to take part in physical activity in a way which minimises the risk of injuries occurring. It will also prepare you to know how to react to common injuries that can occur during sport and physical activity, and how to recognise the symptoms of some common medical conditions.

Topics that you study will include:

- Different factors which influence the risk and severity of injury
- Warm up and cool down routines
- Different types and causes of sports injuries
- Reducing risk, treatment and rehabilitation of sports injuries and medical conditions
- Causes, symptoms and treatment of medical conditions



UNIT 2: Applying the principles of training, fitness and how it affects skill performance

This unit is assessed by a set assignment and practical application, (coursework and practical assessments in TWO sports from the pre-approved list).

By completing this unit, you will conduct a range of fitness tests, understand what they test and their advantages and disadvantages. You will also learn how to design, plan and evaluate a fitness training programme. You will then interpret the data collected from these fitness tests and learn how best to feed this back.

Topics include:

- Components of fitness applied in sport
- Principles of training in sport
- Organising and planning a fitness training programme
- Evaluate own performance in planning and delivery of a fitness training programme



R183: Nutrition and sports performance

This is assessed by a set assignment.

By completing this unit, you will gain understanding of healthy, balanced nutrition. You will consider the necessity of certain nutrients and their role in enabling effective performance in different sporting activities. The knowledge you gain will be used to produce an appropriate, effective nutrition plan for a performer.

Topics include:

- Nutrients needed for a healthy, balanced nutrition plan.
- Applying differing dietary requirements to varying types of sporting activity
- Developing a balanced nutrition plan for a selected sporting activity
- How nutritional behaviours can be managed to improve sports performance.



Comparisons with two sports courses:

- GCSE PE & Sports Science both have the **same amount** of practical time.
- **Both** courses are worth a full GCSE.
- **Both** will give you a pathway through into the 6th form to study sport, **no dead ends.**





Comparison

GCSE PE

- ✓ Equivalent to one full GCSE
- ✓ 1 x GCSE PE practical lesson per week
- ✓ 2 x GCSE PE theory lessons per week
- ✓ (You also get one core PE lesson per week that everyone in Year 10 completes).

Assessment:

60% Theory (two exams in year 11).
10% coursework
30% Practical (three sports)

Sports Science

- ✓ Equivalent to one full GCSE
- ✓ 1 x Sports Science practical lesson per week
- ✓ 2 x Sports Science theory lessons per week
- ✓ (You also get one core PE lesson per week that everyone in Year 10 completes).

Assessment

40% Theory (one exam in Year 11).
60% Coursework (two units completed including assessment in two sports)



Timeline 2024

23 rd January	Year 9 Tutors interview their students
25 th January	Parents' Evening 4.30-7.00pm – 9B, 9C, 9L & 9R
30 th January	Year 9 Tutors interview their students
1 st February	Parents' Evening 4.30-7.00pm – 9E, 9N, 9U & 9S
2 nd February	Tutors submit student options
W/b 5 th February	Pastoral Team interviews where required
9 th February	Final Options choices submitted

