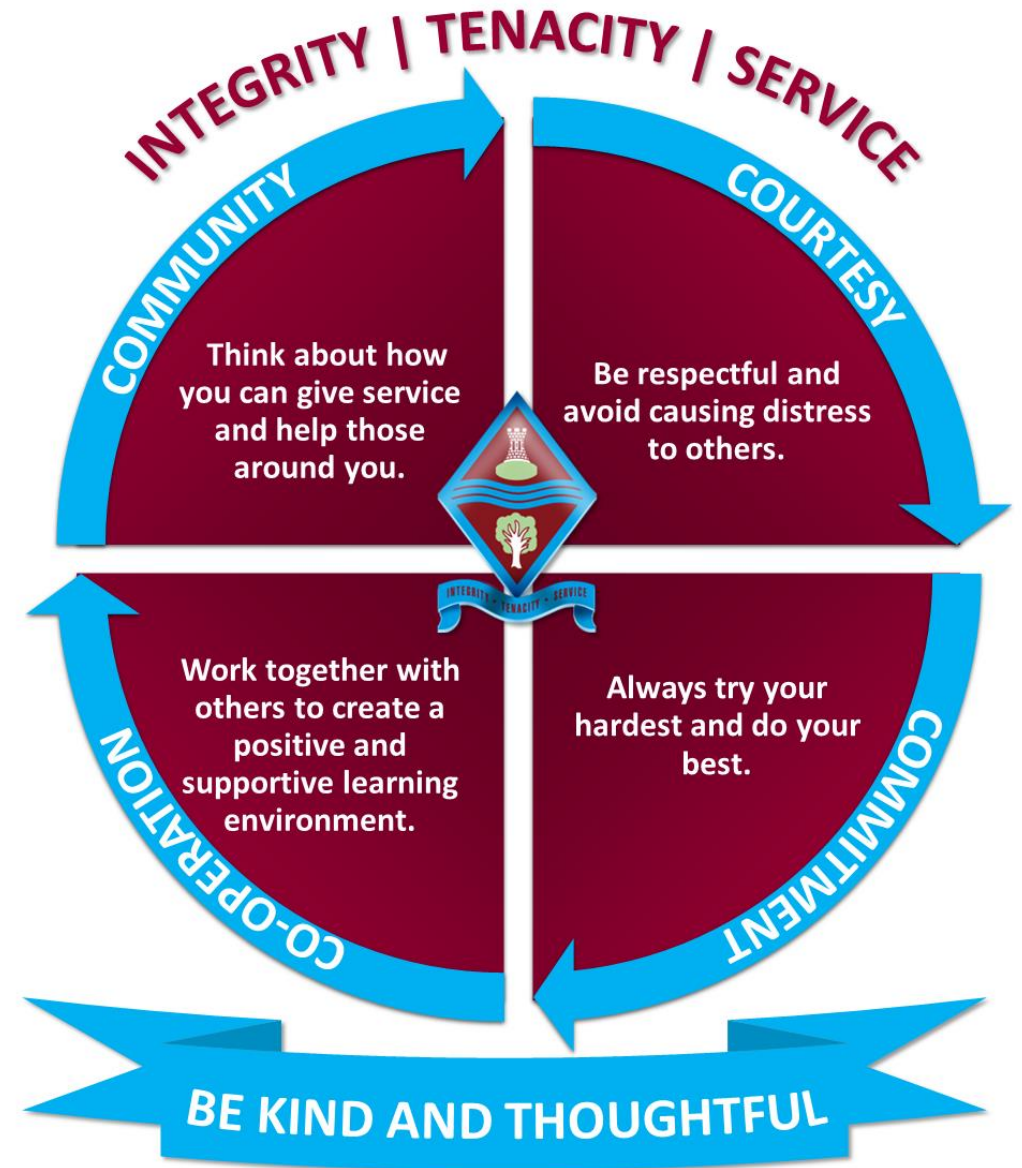


Assembly

Briefing

CODE OF CONDUCT



Timings

For
exam

Arriving on time will mean a calm
start to the exam for you.

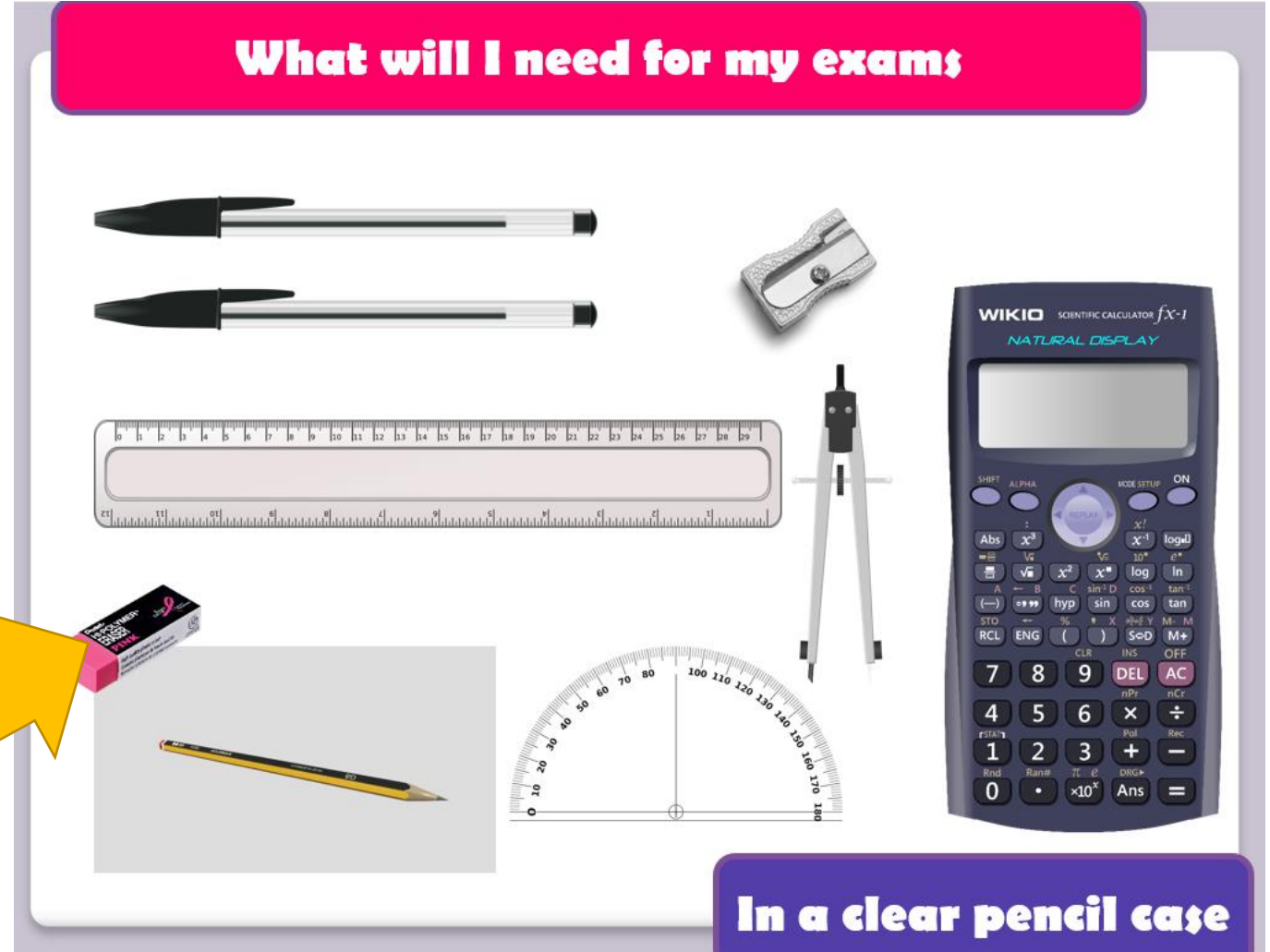
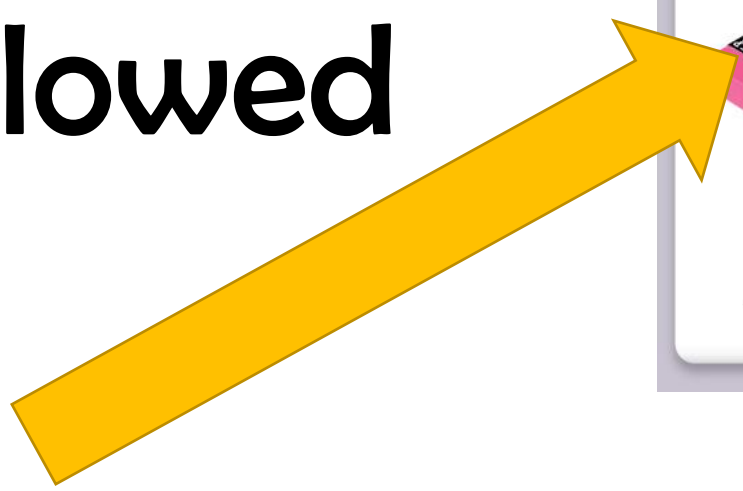
ur

For
exam

And you will be present to hear
important instructions.

your

Don't take anything into your exam that you are not allowed



Prohibited (banned) items

No phone

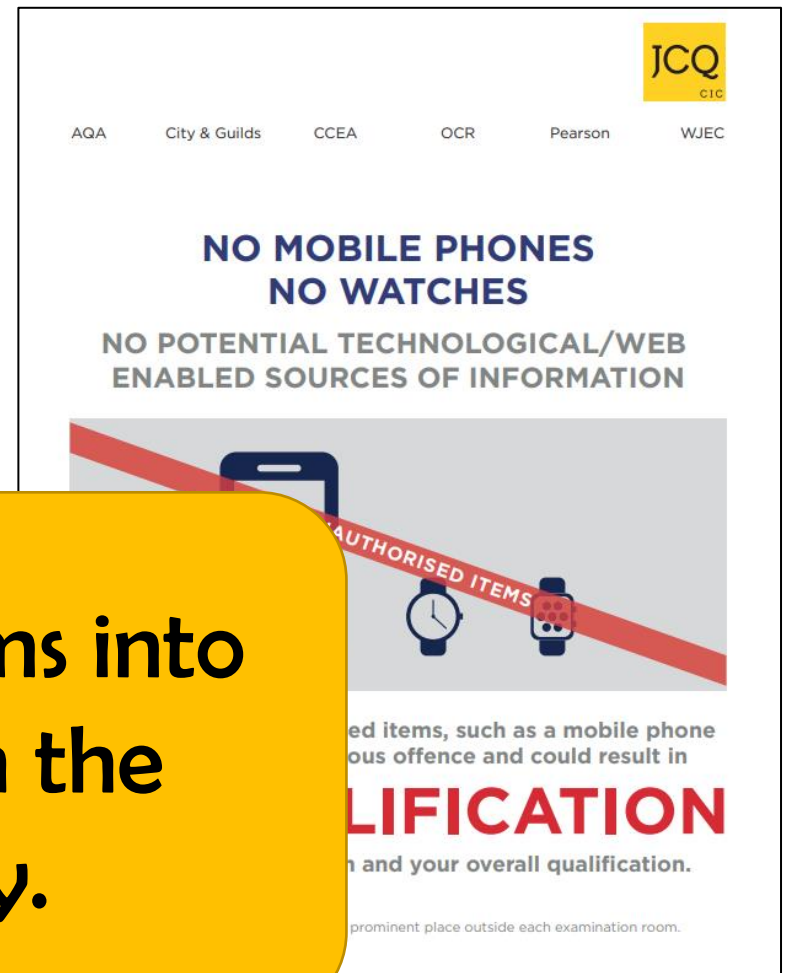
No watch

No headp

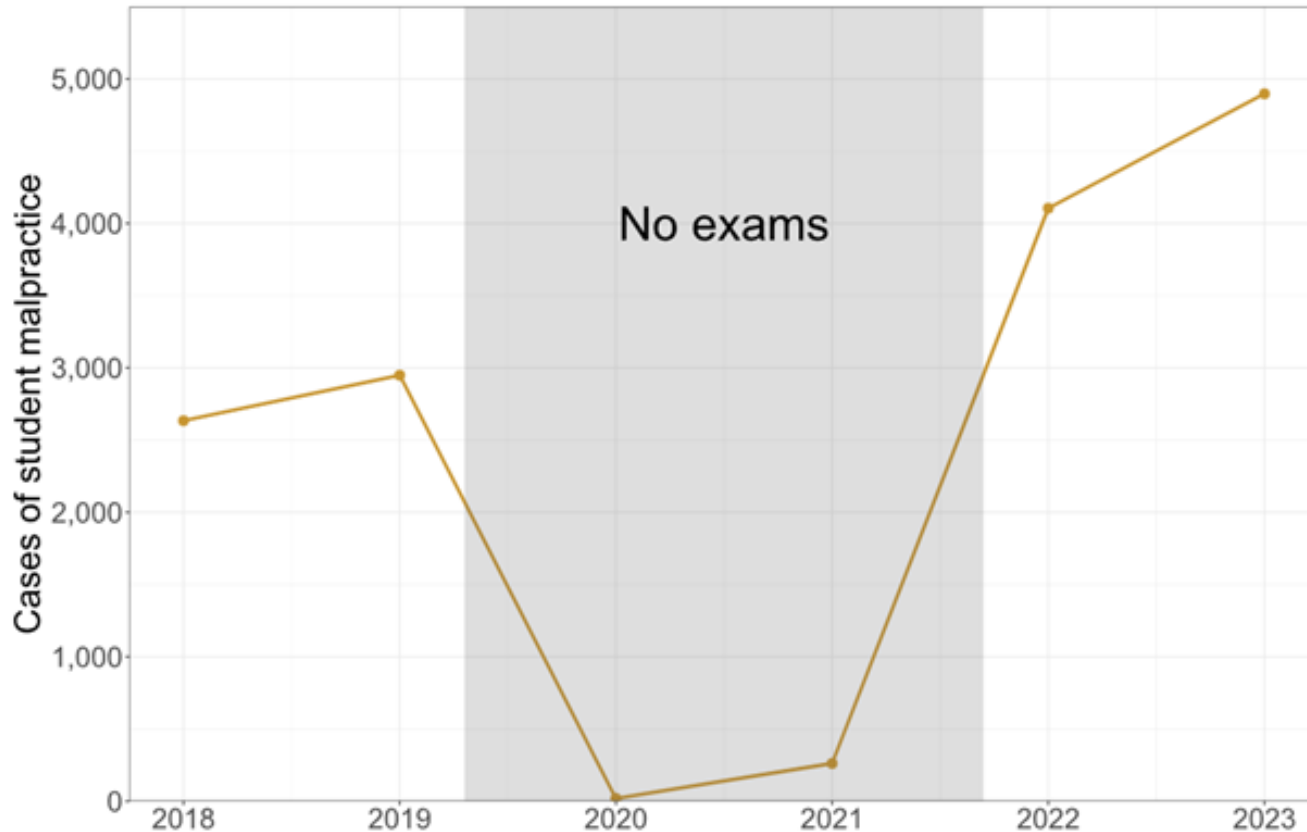
If you bring any of these items into the exam you must inform the invigilators immediately.

Anything with any writing on it.

Calculator cases/covers



Malpractice



Malpractice means not following the rules.

Malpractice is the intentional and unintentional not following of the rules.

We have to conform to JCQ regulations to uphold the integrity of the exams.

Candidate malpractice

Communicating or attempting to communicate with other candidates in the exam room.

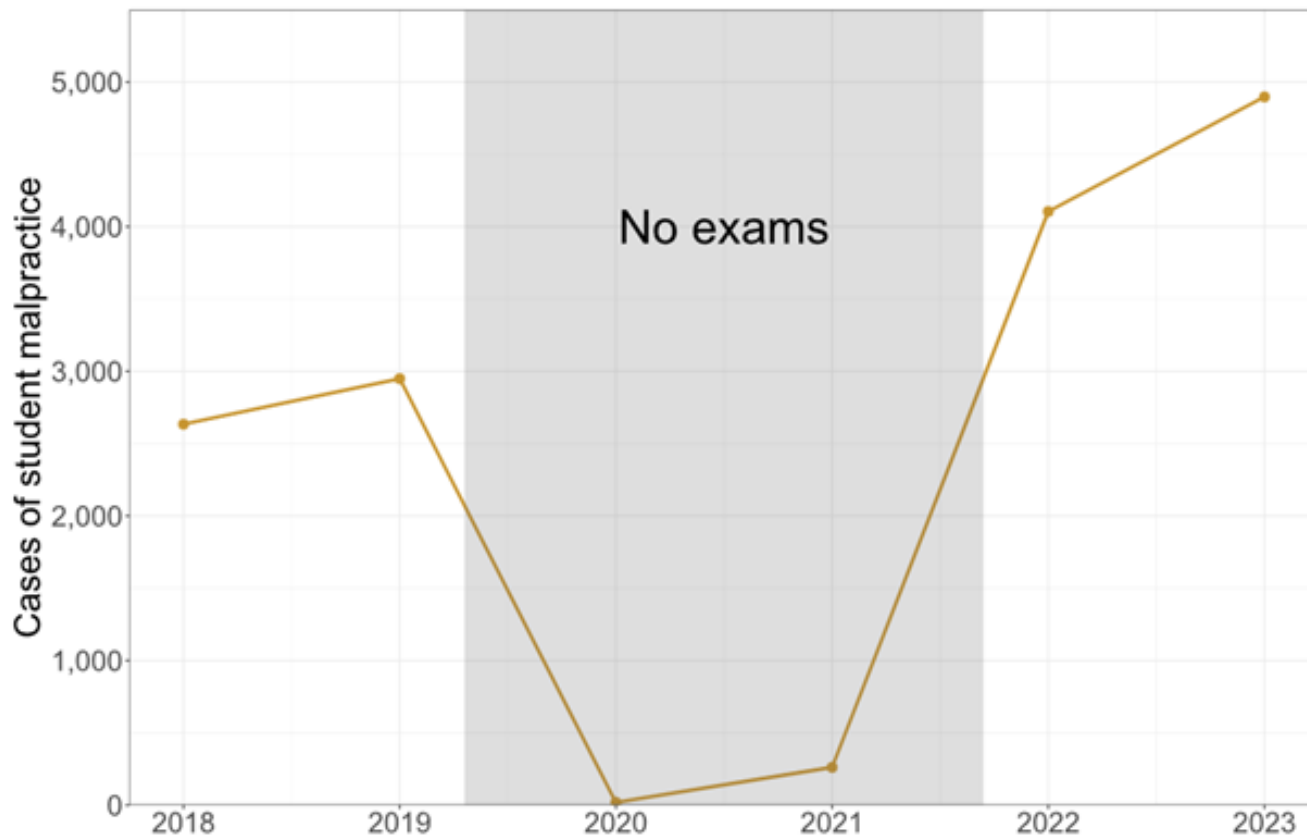


Having unauthorised items and materials in the exam room.



Attempting to access papers before an exam.

Consequences of malpractice



- Loss of marks
- Loss of paper
- Loss of qualification
- Loss of qualifications_
- ...

Emergencies

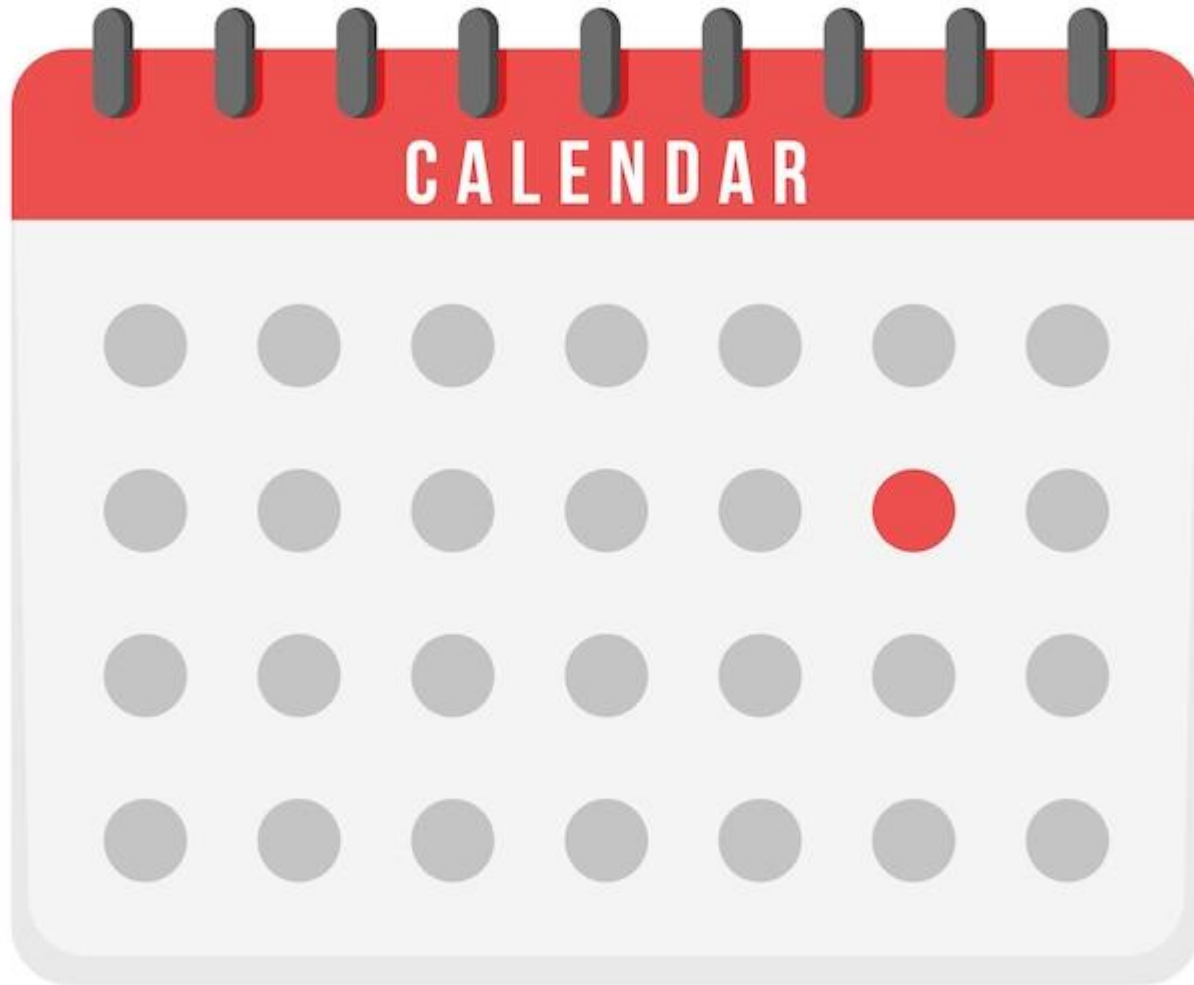
- Follow the instructions of the invigilators.
- Close your paper.
- Do not communicate.
- Assemble in your usual place on the MUGA.



DON'T PANIC.

You will get to finish your exam

Contingency day



6th June 2024 (PM)

13th June 2024 (AM)

26th June 2024 (AM + PM)

Results day

A level – Thursday 15th August

GCSE – Thursday 22nd August

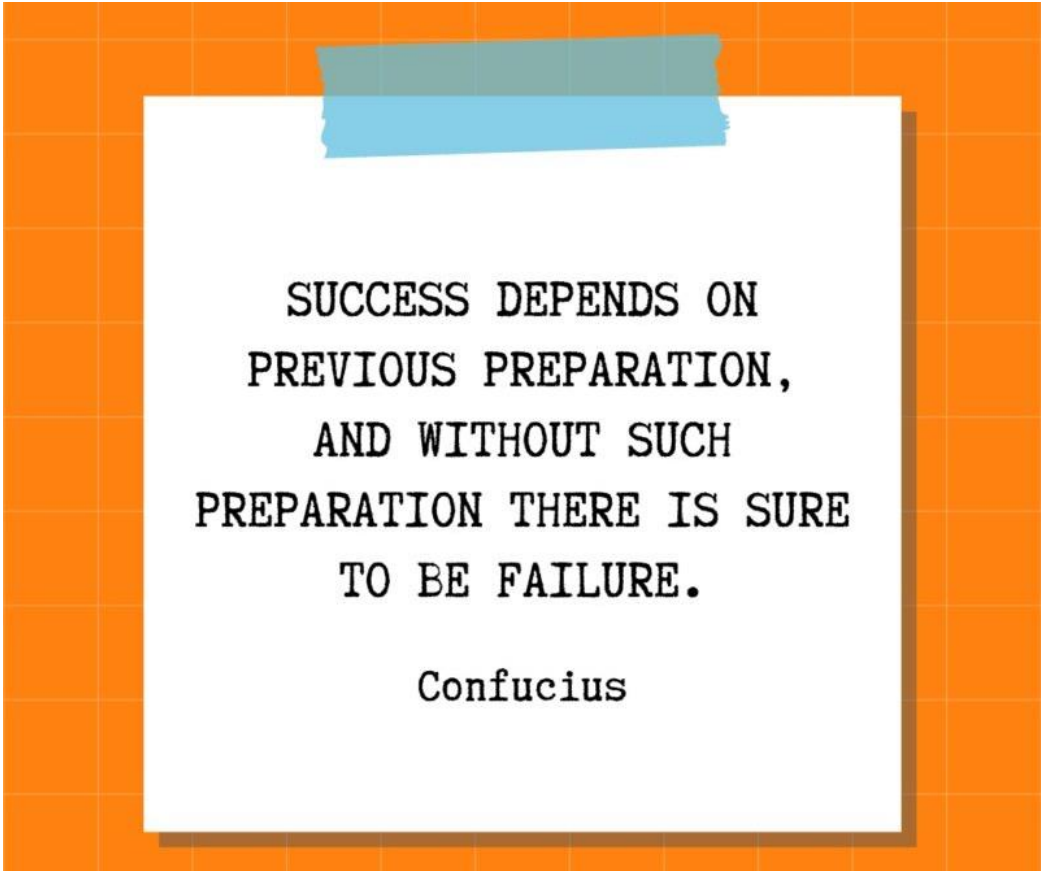
If you are not going to be
able to come to school email
Mrs Green or

exams@ecclesbourne.derbyshire.sch.uk



Good

luck



SUCCESS DEPENDS ON
PREVIOUS PREPARATION,
AND WITHOUT SUCH
PREPARATION THERE IS SURE
TO BE FAILURE.

Confucius